



SENATE BILL 1413

Irving Fire Department Policy
Requirement

IRVING FIRE DEPARTMENT

Traffic Incident Management

- Traffic Incident Management Policy implemented December 2003. The original policy was a recommendation from the International Association of Fire Chiefs in 2003.
- IFD has made multiple changes to the original version to help make our personnel, other first responders and the community safer on our extremely unsafe thoroughfares. Most recent update March 2022.
 - Blocking Program



IRVING FIRE DEPARTMENT Traffic Incident Management

- Hard barrier safety zones



IRVING FIRE DEPARTMENT

Traffic Incident Management

- Look-outs downstream when roadway is shut down

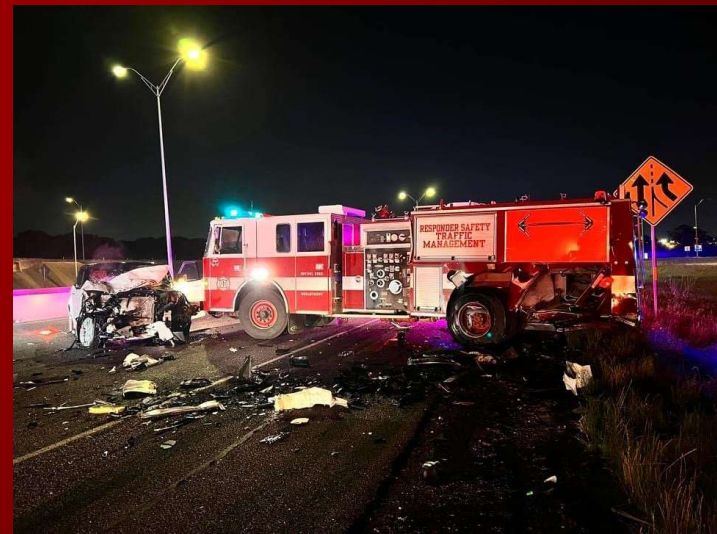


- TIM safety helmets



IRVING FIRE DEPARTMENT Traffic Incident Management

- Now liability protection if vehicles are pulled to the shoulder to reduce first responders' exposure to inattentive drivers. Better known as the “D-drivers”, drunk, drugged, drowsy, distracted, disgruntled, disturbed, disrespectful, drag racers, and driverless.



SENATE BILL 1413
88th Legislature
unanimously approved by the Senate

Through the Texas Fire Chiefs Association (TFCA) legislative committee, I was able to coordinate the TFCA and the Texas Firefighters Association (TSFFA) to submitted and push through a Bill to help further protect our first responders.

The most pertinent information for council consideration, in this Bill is:

(f) The governing body of a political subdivision that has a fire department shall develop and implement a policy concerning the Fire department consulting with law enforcement agencies regarding removal of personal property from a roadway or right-of-way.

IRVING FIRE DEPARTMENT

Traffic Incident Management Policy

1. IFD and IPD crews should work together to clear the roadway of involved vehicles as soon as safely possible, to provide the best assurance of crew safety. Remove crews, apparatus, and equipment from the highway promptly to reduce exposure to moving traffic and minimize traffic congestion. *IFD command will **consult** with IPD officer-in-charge prior to removing any vehicles or other personal property from the roadway.*
2. *Officers must be cognizant of the fact of moving a vehicle outside of law enforcements presence may cause an issue with the evidence of a crime. In these circumstances when the evidentiary nexus is broken an affidavit may be required from the personnel present during the removal or relocation of the vehicle(s). The best practice will be to not move any vehicles when there is the possibility of a crime, i.e. D.U.I., car theft, road rage, etc. Coordination with IPD when a vehicle needs to be relocated will always be the best practice.*

IRVING FIRE DEPARTMENT

Traffic Incident Management Policy

3. However, if the hazard needs to be removed prior to consultation with an on-site IPD officer, the consultation will take place between IFD dispatch and IPD dispatch. The documentation of the scene and the photo retention process will be completed as follows:

a. ONLY a city issued cell phone shall be used to document the scene. IFD personnel shall NOT use personal cell phones.

b. Photographs will be taken of each vehicle(s) showing their respective location to other vehicles involved, or any stationary object for a point of reference.

c. It may be necessary to take photographs of the vehicle(s) from multiple angles to provide a clear assessment of where the vehicles were located, and damages that had occurred prior to relocation.

IRVING FIRE DEPARTMENT

Traffic Incident Management Policy

d. If an IPD officer arrives on-scene prior to IFD personnel clearing the scene, then the IFD officer, that took the photos, will provide the IPD officer-in-charge their city email address. Otherwise, after returning to the fire station, the IFD officer will reach out to IFD dispatch to assist in identifying the IPD officer-in-charge through IPD dispatch.

1.) The IPD officer will email the IFD officer a link to a website

2.) The IFD officer will, once the link has been received, download the photos to the website

3.) Once the photos have been emailed to the website address the photos will be deleted from the city phone

4. Once the decision is made between IFD and IPD to remove the personal property (vehicle) from the roadway and it can be done safely. The IFD Blocker can be used to pull the undrivable vehicle(s) from the roadway utilizing the 3/8-inch 20-foot, Grade 80 chain and the V-Bridal chain with J hooks (if necessary).

IRVING FIRE DEPARTMENT

Traffic Incident Management

2019 - 2022

Emergency Responder
Struck-by-Vehicle Fatalities

Activity at time of Secondary Crash	# of Responders
Disabled Vehicle	83
Crash Scene	54
Traffic Stop	19
Directing Traffic	11
Stop Sticks	9
Police Activity	9
Debris Removal	6
Vehicular Assault	3
Fire Scene	3
Exiting Crossover	2
Safety Checkpoint	1
Speedway Crash Scene	1
Physical Training	1
Crossing Guard	1
Police Chase	1
EMS Standby	1
Public Assist	1
Grand Total	206



**Emergency Responder
Safety Institute**
www.respondersafety.com

QUESTIONS?

