



Center for
Public Safety
Excellence

Center for Public Safety Excellence Roundtable Discussion on Criteria 11B Wellness/Fitness Programs

FRONT  **LINE**
MOBILE HEALTH

a veteran-owned company

AGENDA



The Company



The Program



• Cardiovascular disease 



• Cancer 



• Suicide 

The Data –

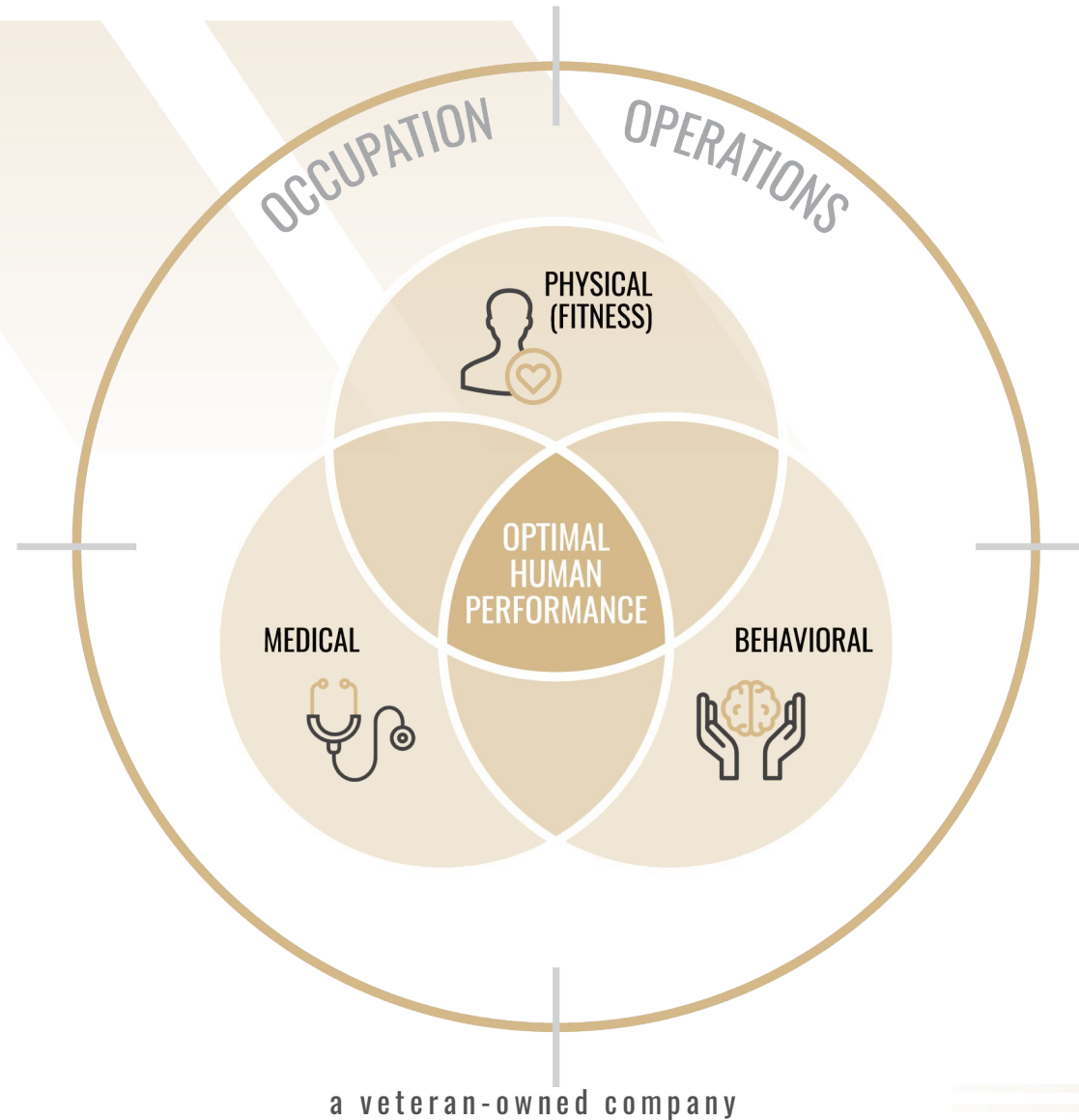
Operational Readiness

Organizational Readiness

CRITERIA 11B

1. The agency provides for initial, regular, and rehabilitative medical, and fitness evaluations
2. The agency makes available wellness/fitness training to all employees/members
3. The agency provides an employee/member assistance program with timely access to critical incident stress debriefing, peer support and counseling, and other behavioral health resources
4. The agency provides for cancer and behavioral health screenings and a cardiac assessment
5. A formal and documented appraisal is conducted, at least annually, to determine the effectiveness of the wellness/fitness programs and its impact on meeting the agency' s goals and objectives

THE FRONT LINE METHOD





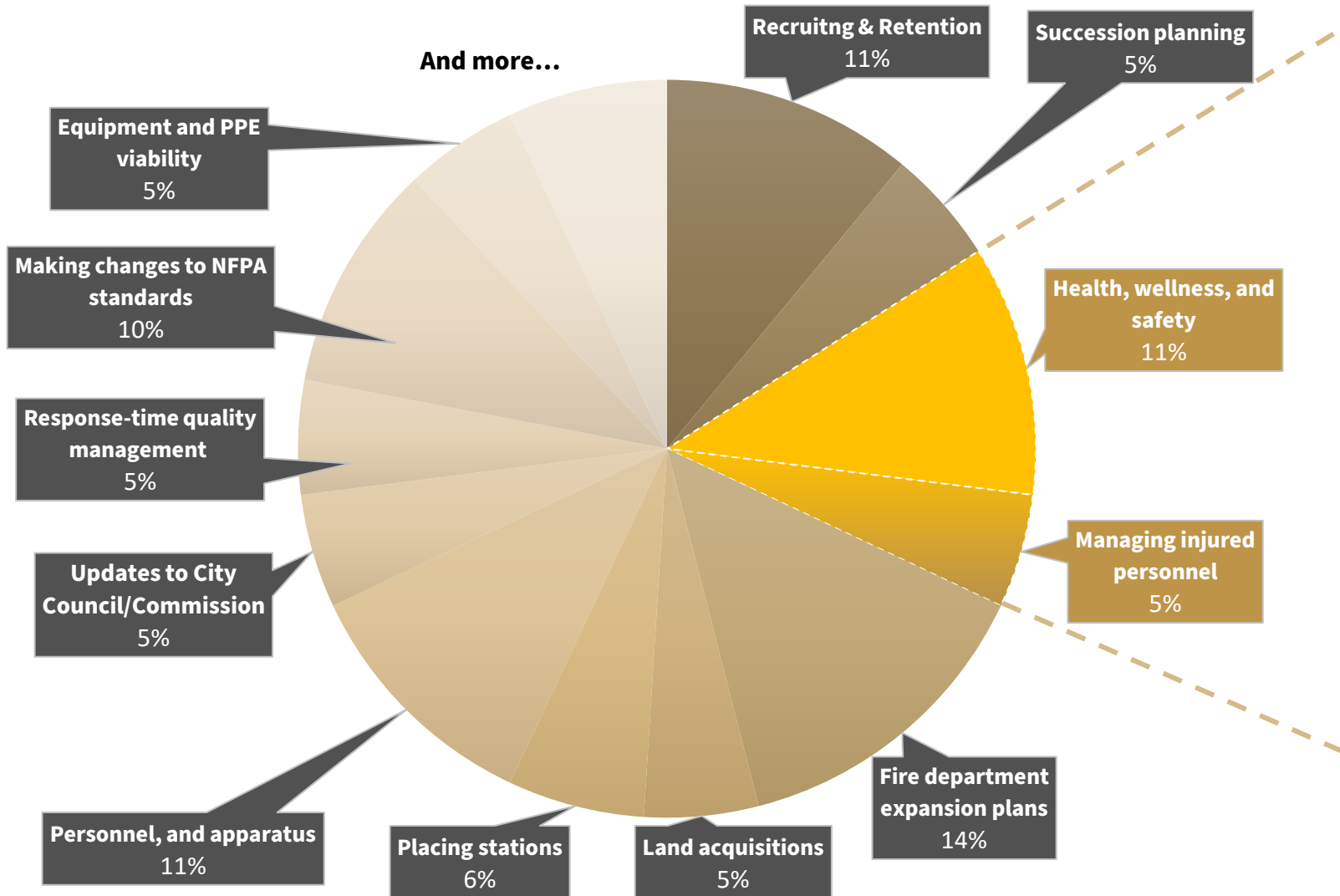
Center for
Public Safety
Excellence

The agency provides for initial, regular, and rehabilitative medical, and fitness evaluations

FRONT  **LINE**
MOBILE HEALTH

a veteran-owned company

PUBLIC SAFETY LEADER RESPONSIBILITIES

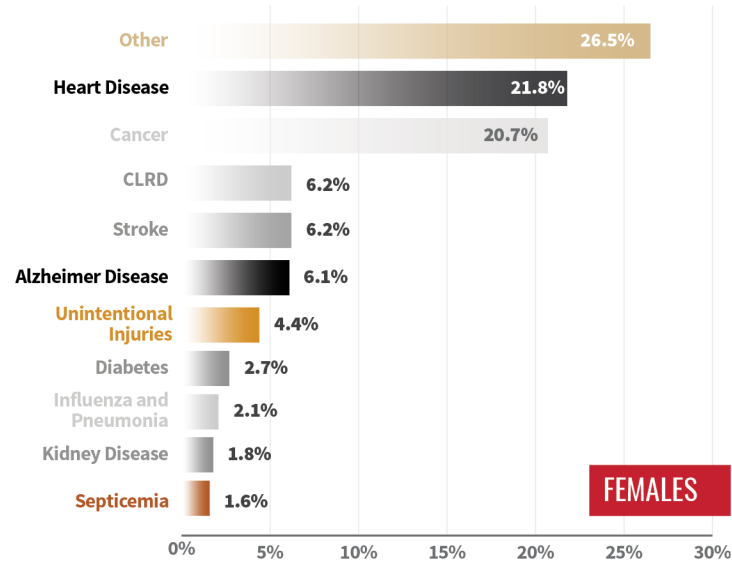
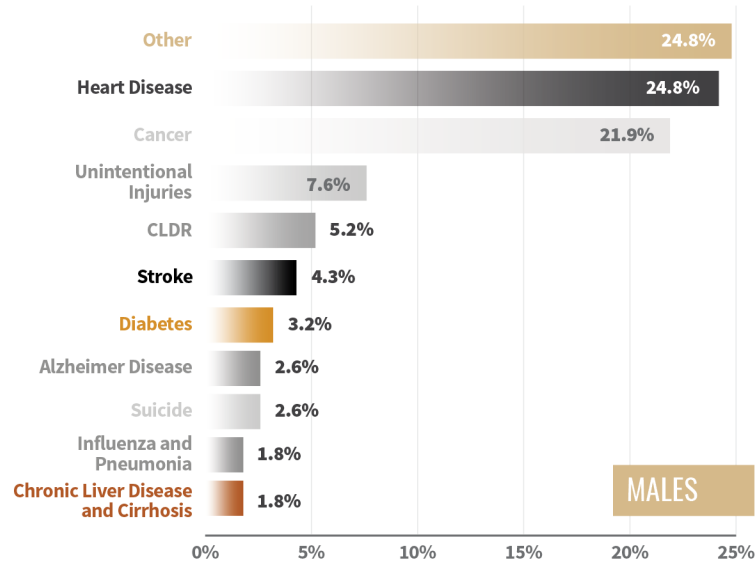


YOUR OUTSOURCED MEDICAL NEEDS

- Annual physicals
- Candidate physicals
- Psychological evaluations
- Immunizations
- Behavioral health evaluations
- Risk management
- Return to work physicals
- Worker's compensation claims
- Medical Education
- Development workshops
- PPE Selection and Research
- Disease Surveillance
- Health Benefits
- Primary Care for personnel

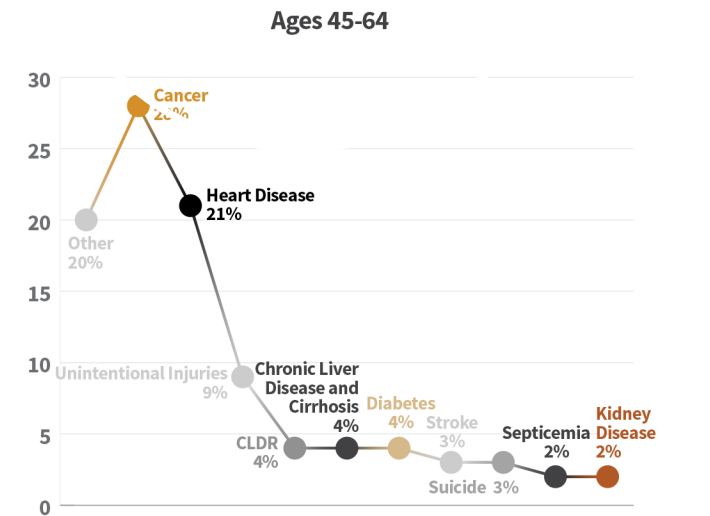
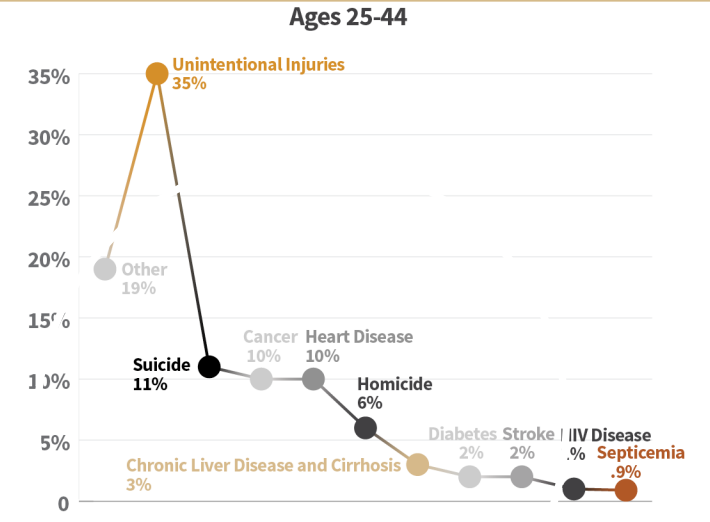


CURRENT OPERATING ENVIRONMENT



Notes: CLRD is chronic lower respiratory diseases. Values show percentage of total deaths. Totals may not add to 100 due to rounding. Source: NCHS National Vital Statistics Systems, Mortality.

Percent Distribution Of The 10 Leading Cause Of Death, By Sex: United States, 2017



Notes: CLRD is chronic lower respiratory diseases.

National Fire Protection Association's Research Paper United States Firefighter Injuries, 2017





Center for
Public Safety
Excellence

The agency provides for cancer and behavioral health screenings and a cardiac assessment

FRONT  **LINE**
MOBILE HEALTH

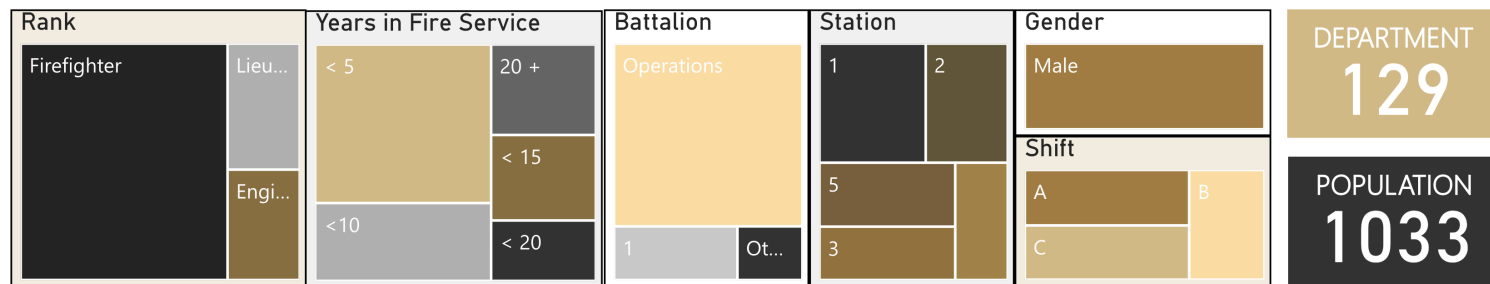
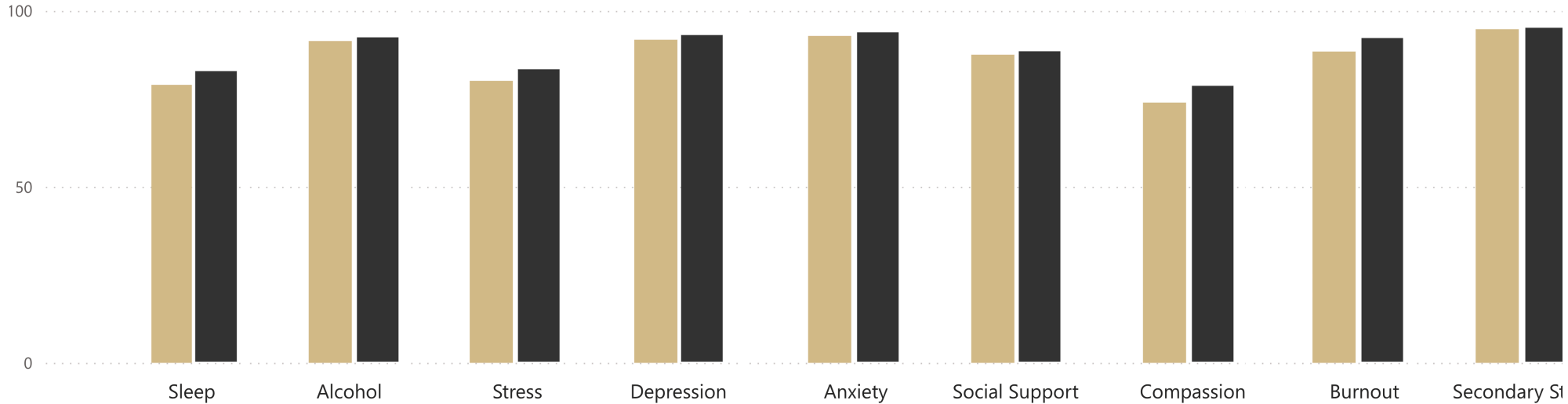
a veteran-owned company

CANCER SCREENING



BHAVIORAL HEALTH SCREENINGS

HUMAN PERFORMANCE ASSESSMENT



CARDIAC ASSESSMENT





Center for
Public Safety
Excellence

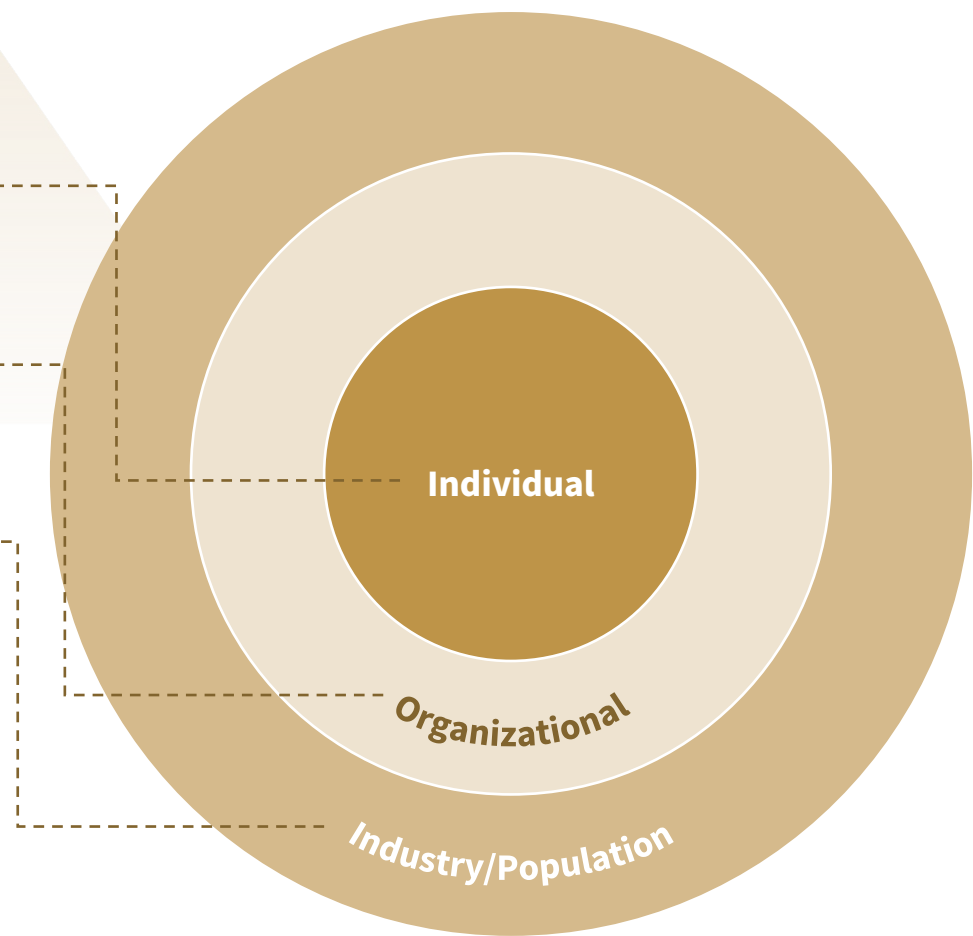
A formal and documented appraisal is conducted, at least annually, to determine the effectiveness of the wellness/fitness programs and its impact on meeting the agency's goals and objectives

FRONT  **LINE**
MOBILE HEALTH

a veteran-owned company

DATA-DRIVEN

- **Individual** – Front Line Total Health Assessment
 - Data for better *individual* health decisions
- **Organizational** – Front Line Medical Threat Brief
 - Data to drive *organizational* policy
- **Industry/Population** – Front Line Network cumulative industry data to show trends
 - Get the bigger picture to be proactive/lead within an industry





Center for
Public Safety
Excellence



Travis County ESD No. 2
(sharepoint.com)

FRONT  **LINE**
MOBILE HEALTH

a veteran-owned company



Center for
Public Safety
Excellence



Microsoft Power BI

FRONT  **LINE**
MOBILE HEALTH

a veteran-owned company



Center for
Public Safety
Excellence



Microsoft Power BI

FRONT  **LINE**
MOBILE HEALTH

a veteran-owned company



THE COST OF CHECKING THE BOX

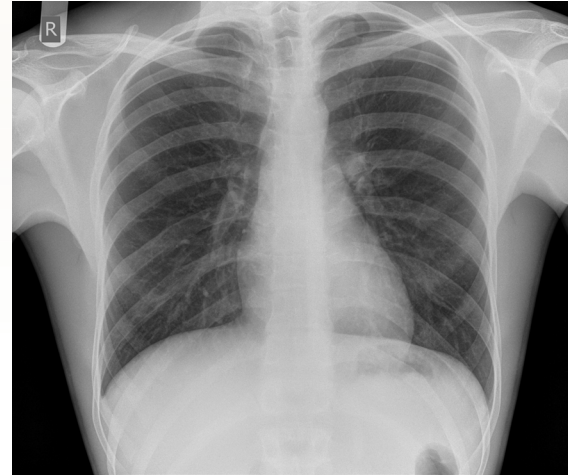
PACEMAKER

- Current firefighter
- Did not disclose this information
- Had before getting hired

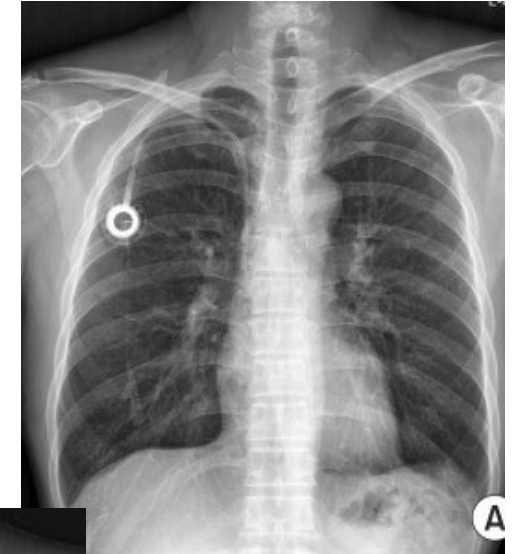
MEDIPOINT

- New hire firefighter
- Did not disclose this information
- Hx of leukemia, currently in remission

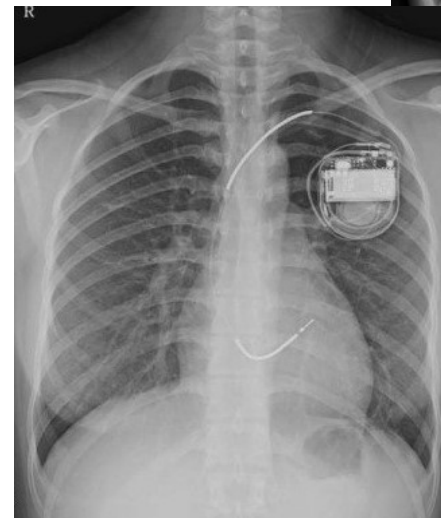
NORMAL



MEDIPOINT



PACEMAKER



Lead From The Front

Russ Burnham, Team Principal
russ@frontlinemobilehealth.com

512-800-9590

FRONT  **LINE**
MOBILE HEALTH

a veteran-owned company

