

TUFF-HUT 72

Jobsite hut for security, safety and welfare!

Tuff-Hut 72

Highly durable Steel / Aluminum structure with integrated forklift slots, customizable color, branding and accessories available.

Hoistable for use with cranes, fully insulated, heated and air conditioned.

Electrics professionally installed and commissioned.

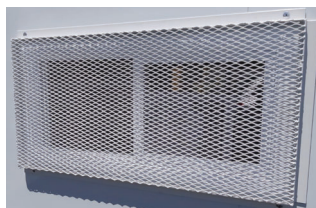
Window guard screens optional.

Common uses:

- Site Shower
- Banksman hut
- Site Security hut
- First aid station
- Welfare hut
- Winterproof Handwashing Station

SIZE: 48" (W) X 72" (D) X 96" (H)

WEIGHT: 400lbs



Air Conditioning



Electric Heater



Power Sockets



Fully insulated



Work Desk