

# TuffHut72 Washstation Unit

Winterproof Portable Handwashing station

## Winterproof WashStation Unit

Highly durable Steel / Aluminum structure with integrated forklift slots, fully insulated, 35 gallon reservoirs (440 hand washes)

Hoistable for use with cranes, fully insulated, heated and air conditioned (AC optional).

Easy hook up shore power

Towel and Soap Dispensers

Options available : custom branding, fitted rubber mat, window guards.

Windows Optional.

**SIZE: 48" (W) X 72" (D) X 96" (H)**

**WEIGHT: 500lbs**



**Easy Fill/Empty Reservoirs**



**Water Heater**



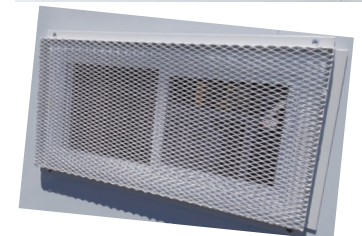
**Shore Power Hookup**



**Fully Insulated and Heated**



**Stainless Steel Sink**



**TUFFCO**  
SITE INNOVATION

**TUFFCO GROUP HEAD OFFICE:**  
107 Harvey St. Kingston  
Ontario, Canada K7K 5C1

Phone: 1800 322 2600  
E-mail: [info@tuffcogroup.ca](mailto:info@tuffcogroup.ca)  
[www.tuffcogroup.ca](http://www.tuffcogroup.ca)