

# Out the Window



**Good morning!**

Reno National Weather Service  
Forecasting for the Sierra and western Nevada since 1905



## Key Points

- **Another round of snow, including for W Nevada valleys, this evening into early Sunday morning.** Travel impacts likely, plan for delays and restrictions. Bands of heavier snow could develop leading to some areas receiving 2-4" of snow while spots not far away see little accumulation. Where those bands set up is low certainty right now.
- **Quick little brush by deal Wednesday.** A few light snow showers for mountain areas but likely minimal impact.
- **Active storm period remains favored late this week through Christmas holiday,** however character has changed. What earlier seemed like a heavy precip, atmospheric river pattern has trended more toward a couple weak to moderate winter storms with more snow impact especially in mountains. Timing on specific storms is also changing - we could see something as early as Thursday-Friday but recent simulations are now favoring more Saturday-Sunday storm impact.

## Important Changes

- Increased confidence in snow impacts this evening, overnight - but snow amounts will be quite variable.
- Storms late week into Christmas changing in character, timing.

How much has the forecast changed?


Minor Changes

Moderate Changes

Many Changes

# Situational Awareness - When Should I Freak Out?

NWS Reno 7-14 Day Scan for Unusual Upcoming Weather across the Eastern Sierra and Western Nevada

	Sat 12/14	Sun 12/15	Mon 12/16	Tues 12/17	Wed 12/18	Thurs 12/19	Fri 12/20	W2 12/21-27
<b>Wind</b>	Gusty W/NW winds Mono County.	Gusty NW winds, mainly Hwy 95 Hawthorne south.	Light winds for the most part.			Gusty SW winds possible.		 Remaining active but more typical winter storm type stuff. Low certainty on timing but has a good chance of affecting holiday travel. Sat-Sun has some promise for mountain snows.
<b>Snow</b>	Light, scattered rain/snow showers Sat. Period of snow Sat eve into Sun AM mountains + W Nev cities. Snow amounts variable but travel impacts expected.		Minimal snow chances.		Light snow showers Sierra.	Odds of a storm are going down but can't rule something out late week. Simulations showing extra-large variability.		
<b>Flooding</b>	No issues anticipated.							
<b>Unusual Cold or Heat</b>	Seasonable.	Chilly days with temps ~3-8 degrees below normal. Coldest Mon-Tues. Impacts to vulnerable populations.			Warming back to near normal.			
<b>Ventilation, Fog</b>	More mixing.		Low ventilation. Worst Tuesday with light winds, warming aloft.			Better mixing possible.		

**What Does This Mean?** Integrates impacts and confidence

No worries



Low freakoutness



Moderate freakoutness



High freakoutness



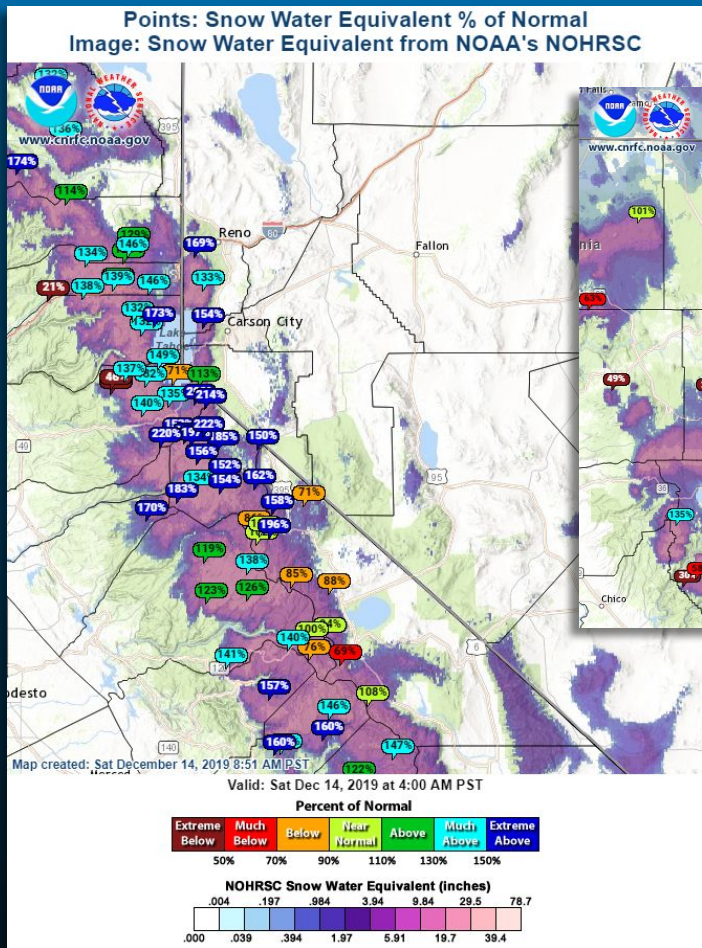
Really bad



# More Snow in Sierra

24 hour Snowfall - 12/14/2019 - 8 AMish

Mount Rose	5-7"
Heavenly	6"
Northstar	9"
Boreal	2"
Alpine Meadows	9-13"
Squaw Valley	6-14"
Sugar Bowl	11-15"
Tahoe Donner	7"
Kirkwood	8"
Mammoth	5-6"
Homewood	4-10"
Diamond Peak	5"



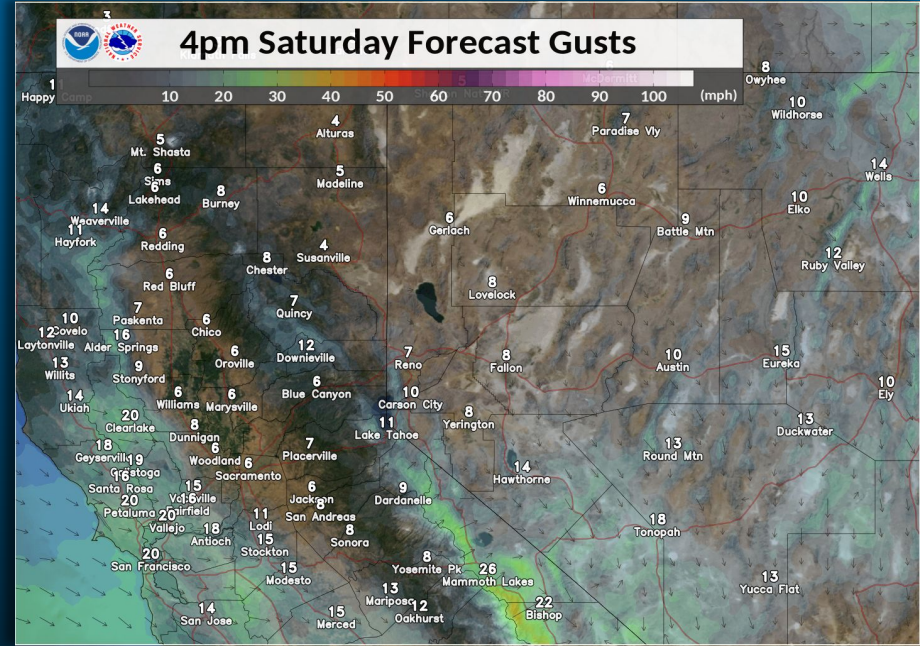
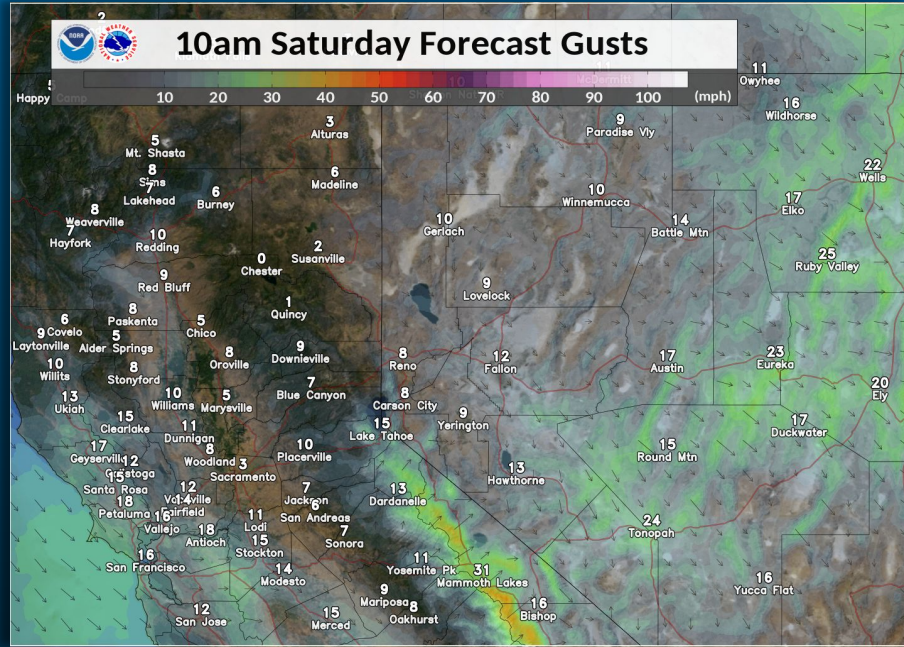
**Reno National Weather Service**  
Forecasting for the Sierra and western Nevada since 1905



Reno National Weather Service  
Forecasting for the Sierra and western Nevada since 1905



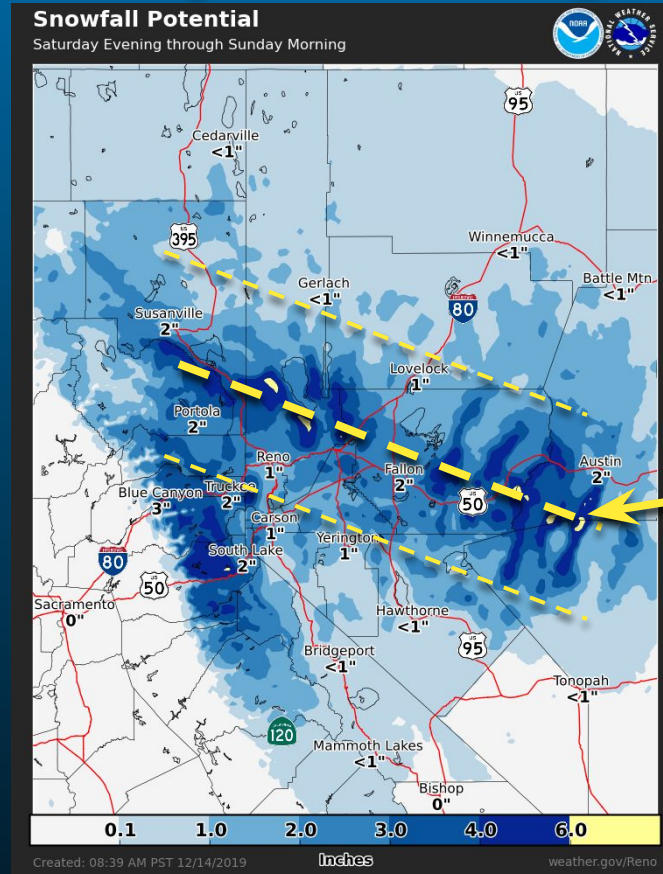
# Gusty Winds Eastern Sierra, Gradually Subsiding



Localized travel impacts possible. Sierra ridge wind gusts including Mammoth Mountain roughly 50-70 mph today.

# Another Round of Snow Impacts Tonight

- **Timing:** Snow increasing after 4 PM today, tapering off by 4 AM Sunday. Best chances for W Nevada snow roughly 8 PM to 2 AM.
- **Confidence:** High in seeing light snow but low in position of banding of heavier snow totals.
- **Impacts:** Travel impacts for both mountain and W Nevada travel tonight and early Sunday morning. Expect delays and restrictions.
- **Actions:** Check road conditions before heading out, not by calling us, but checking with Caltrans or NDOT.

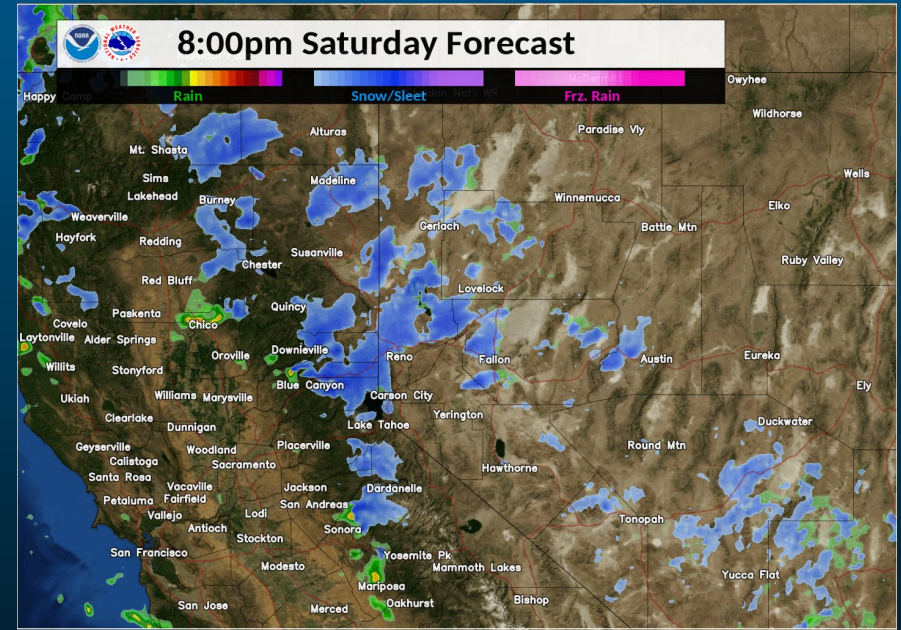


Thick yellow line shows area with highest risk of seeing enhanced snows tonight. Position of this band of heavier snow may shift north or south (thinner lines). Example: Gerlach would get 2-4" if banding shifts far enough north.

# Forecast Radar for This Evening

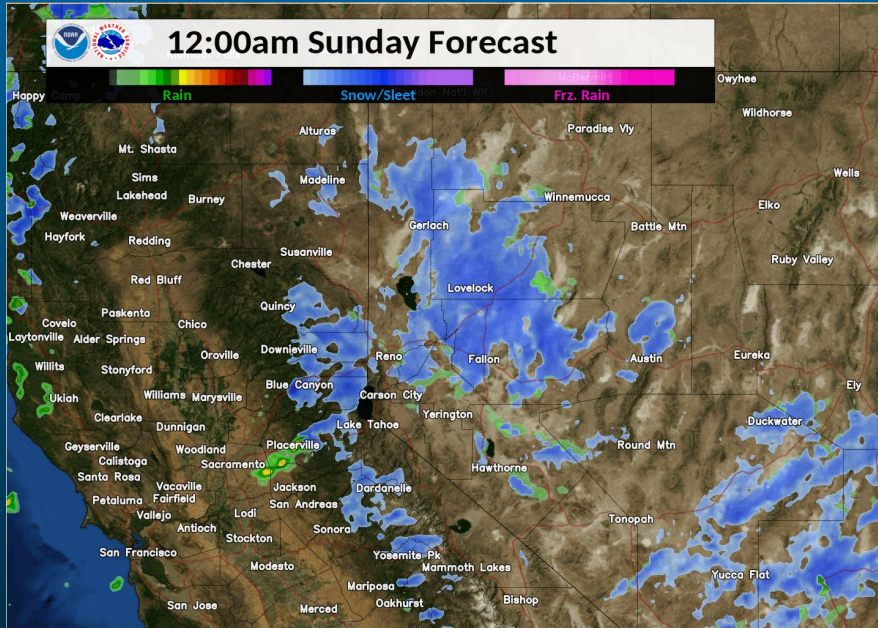


Snow showers start increasing in NE California and around Tahoe by sundown today. Thunderstorms possible on the west side which spillover east of the crest.



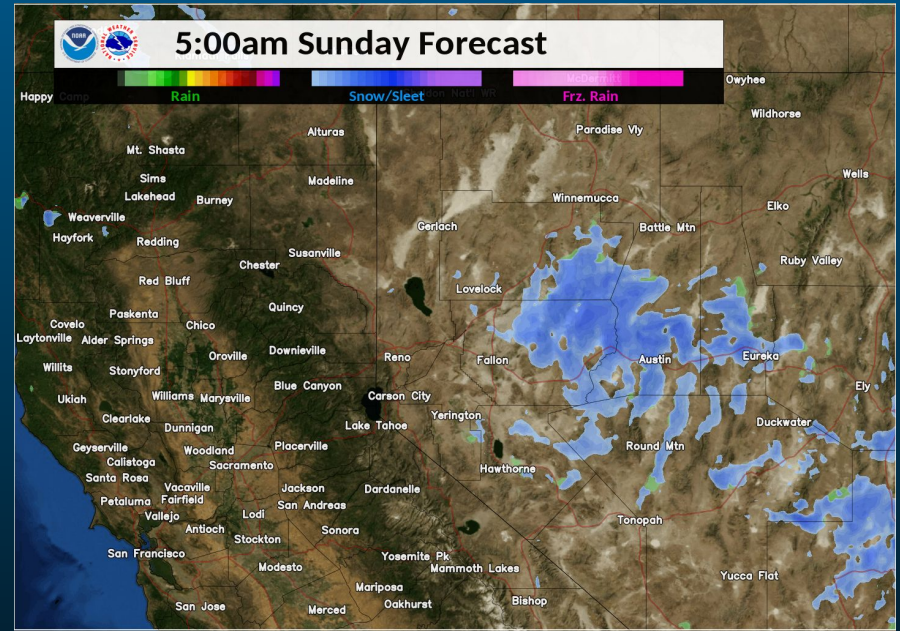
Highest impact period with band of heavy precip moving into Sierra around Donner Pass. Major snow impacts likely for mountain roads. Spillover snow into W Nevada. Position of heavier bands of snow remains low certainty.

# Forecast Radar for Early Sunday Morning



Light snow continues around I-80 corridor with a few showers for the Eastern Sierra. Not a big snow event for Mono County.

Light snow moves off into Central Nevada by sunrise Sunday.





# Thoughts on Next Week Storm Potential



**Yeah, that about sums it up this morning!**

Our model simulations are showing an extra-large amount of variability on storm timing, character, and intensity for next week. That really reduces confidence levels in any one scenario panning out.

The pattern looks to remain active late next week into the Christmas holiday overall so expect some weather impacts. We just don't know a lot more than that right now. Latest trends are downward on storm risk next Thursday-Friday but upward for Saturday-Sunday.