

# FULL CLOSURE -- SOUTH MILPITAS BOULEVARD BETWEEN MONTAGUE EXPRESSWAY AND GARDEN STREET

**WHAT:** There will be a FULL CLOSURE of South Milpitas Boulevard between the intersection of Montague Expressway and Garden Street. No traffic will be permitted for an approximate five week period during construction.

**WHEN:** Starting: October 14th  
Ending: Late November

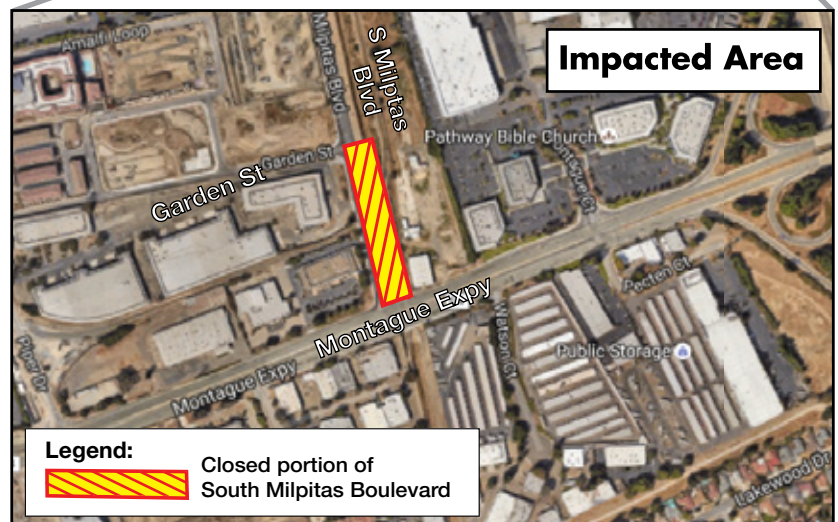
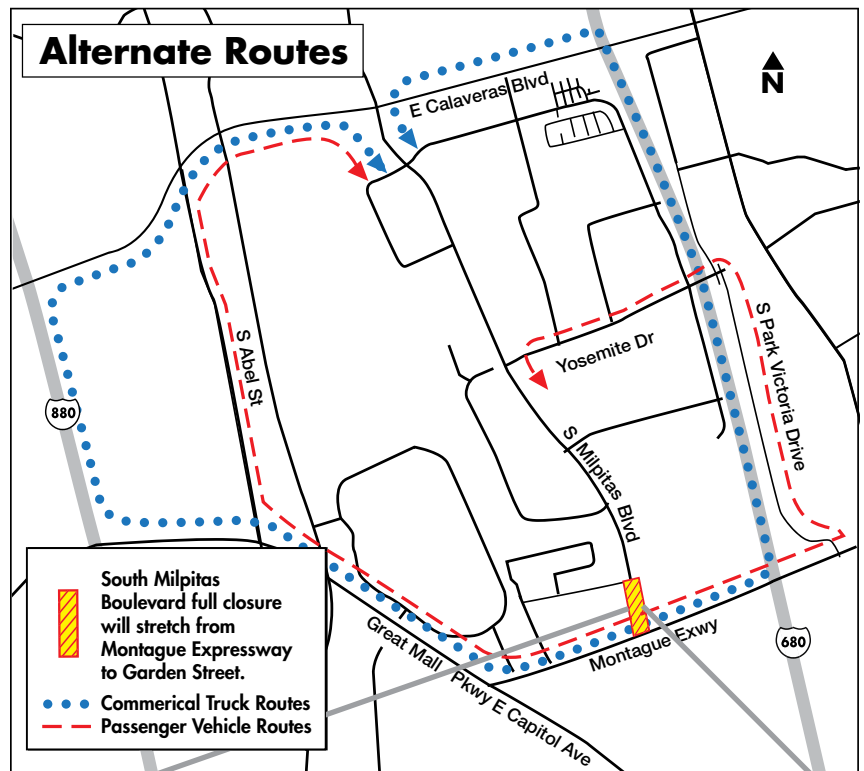
**WHY:** VTA, in coordination with the Santa Clara Valley Water District, the City of Milpitas and the County of Santa Clara is currently implementing a number of improvements on South Milpitas Boulevard and Montague Expressway. Berryessa Creek is being reengineered at the intersection of Montague Expressway and South Milpitas Boulevard as a flood protection measure to guard against 100 year flooding events. The banks of the creek will be widened and stabilized and the construction of a new bridge will require the intersection at Montague Expressway and South Milpitas Boulevard to be raised by 6 feet and widened to properly account for the new improvements. Multimodal access will be improved on the expressway by the addition of sidewalks, paved shoulders and an additional HOV lane. South Milpitas Boulevard will also be extended to connect to Capitol Ave.

South Milpitas Boulevard will be closed completely to raise the intersection and match the level of the newly constructed bridge over Lower Berryessa Creek at Montague Expressway. Underground utility work will also be completed during this closure.

## TRAFFIC DETOUR AND ALTERNATE ROUTE:

We understand that this is a considerable impact to local residents, businesses and commuters. Traffic attempting to access South Milpitas Boulevard will have a number of options.

Calaveras Boulevard exits from I-680 and I-880 can offer regional traffic access. Local traffic using Montague Expressway can utilize Great Mall Parkway and South Abel Street to avoid getting on I-880 or South Park Victoria to Yosemite Dr. to avoid I-680. Please see the attached detour graphic for clarification. We greatly appreciate the public's continued patience and understanding as we push to deliver these improvements.





1436 California Circle • Milpitas, CA 95035

PRESORTED  
STANDARD  
U.S. POSTAGE  
PAID  
PERMIT NO. 589  
SAN JOSE, CA

**FULL CLOSURE --  
SOUTH MILPITAS BOULEVARD  
BETWEEN MONTAGUE EXPRESSWAY  
AND GARDEN STREET**

---

**To Learn More** For further information on the Montague Expressway/South Milpitas Boulevard Improvement Project, the Berryessa BART Expansion, or information on flood prevention efforts on Berryessa Creek and how these projects may impact you, go to [www.vta.org/bart/montaguemilpitas](http://www.vta.org/bart/montaguemilpitas) for expanded project details, schedule, traffic advisories and construction notices.

**How to Reach Us** If you have any questions or would like to be added to the project mailing list please call VTA-BART Community Outreach at (408) 934-2662, (TTY) for the hearing-impaired at (408) 321-2330. You may also sign up for project email updates online at [www.vta.org](http://www.vta.org) or email us at [vtabart@vta.org](mailto:vtabart@vta.org).