

WANTED

INVASIVE LIONFISH



★ THE LIONFISH IS A CARNIVOROUS INVASIVE SPECIES WITH FEW NATURAL PREDATORS.

★ LIONFISH SPINES CONTAIN VENOM. CONTACT WITH ONE OF ITS POISONOUS SPINES WILL INFLICT SEVERE PAIN AND SWELLING. ONLY KILL THE FISH IF YOU CAN DO SO SAFELY.

★ TO REPORT A SIGHTING:

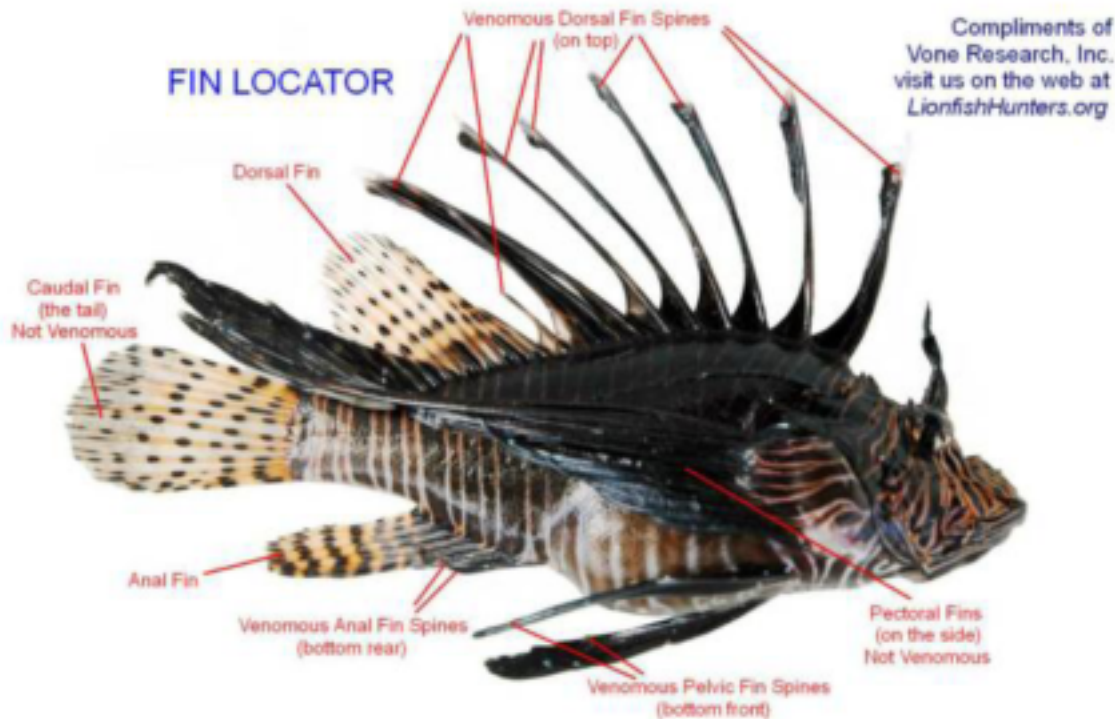
- RECORD THE LOCATION (USING GPS COORDINATES).
- TAKE A PHOTO IF POSSIBLE.
- CONTACT THE LOUISIANA DEPARTMENT OF WILDLIFE AND FISHERIES AT (225) 765-0765.

Send Any sighting info to Robert Bourgeois rbourgeois@wlf.la.gov send location and depth and quantity.



LION FISH

(Pterois miles and Pterois volitans)



The Lion Fish is a species native to the Indo-Pacific, but has been seen in increasing populations along the Southeastern coasts of the U.S., Gulf of Mexico and Caribbean. The increases in populations are believed to stem from humans releasing unwanted aquarium fish into the wild.

Concern over the rising population of Lion Fish is due to its invasive nature. Lion Fish have very few natural predators. They are also a danger to humans because they carry venom in their fins that can lead to severe pain and swelling. This carnivorous species feeds on smaller aquatic wildlife, specifically immature snapper and grouper.

Conventional methods to eradicate this species have proven ineffective. Assistance in collecting data on this species is crucial in the effort to determine this species role in the future of coastal reefs. Sightings should be reported to the Louisiana Department of Wildlife and Fisheries. Please report depth, GPS location, and quantity to Robert Bourgeois at rbourgeois@wlf.la.gov