



United States Department of Agriculture
Office of Partnerships & Public Engagement

CENTERS OF COMMUNITY PROSPERITY



Centers of Community Prosperity represent the partnerships between USDA and USDA stakeholders including USDA agencies, cooperative extension, other federal departments, and private sector partners, such as, non-governmental and philanthropic organizations, community development financial institutions, and others. Centers of Community Prosperity work to foster hope and opportunity, wealth creation, and asset building.

USDA is an equal opportunity provider, employer, and lender.

www.USDA.gov



Centers of Community Prosperity

OFFICE OF PARTNERSHIPS & PUBLIC ENGAGEMENT

MISSION

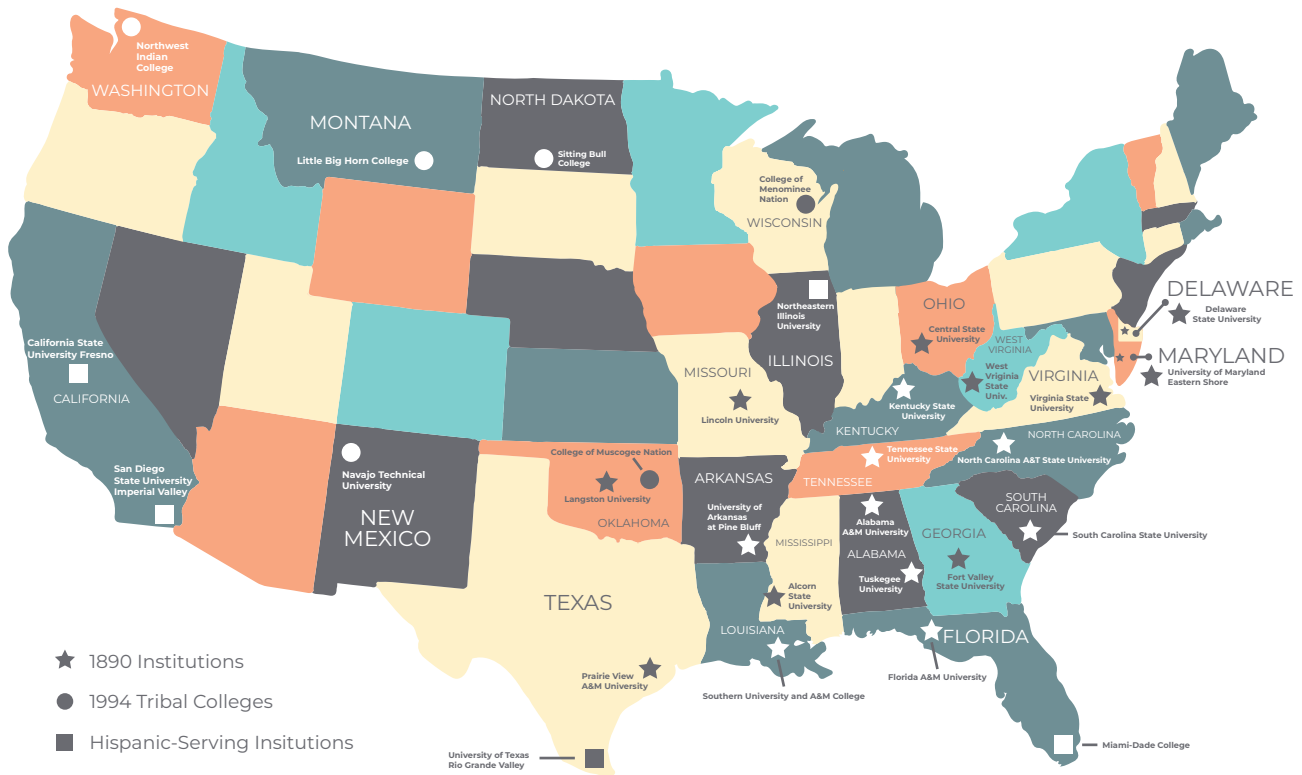
To develop partnerships with business and agribusiness, faith-based, education, elected, and other community leaders to identify key challenges and develop strategies for success. This will include the most effective and efficient utilization of all available resources, both public and private, to assist these communities in acquiring the education and tools necessary to foster hope and opportunity, wealth creation and asset building.

VISION

To establish a sustainable development process focusing on locally driven, bottom-up solutions to address challenges in rural and underserved communities. This process will create a "Climate of Success" that fosters hope and opportunity, wealth creation, and asset building, for our families, farmers and ranchers, and businesses. These communities will be safe, healthy, educated, and growing.

PLAN OF ACTION

- ◆ Establish Centers of Community Prosperity that **foster hope and opportunity, wealth creation, and asset building**;
- ◆ Strengthen partnerships and align Centers of Community Prosperity with 1862, 1890, and 1994 Land-Grant institutions, Hispanic-Serving Institutions and other public and private entities guaranteeing exceptional customer service and opportunities;
- ◆ Identify efficient and sustainable processes and effective strategies that will **establish 200 Communities of Faith and Opportunity** by end of 2019; and
- ◆ Help communities establish "Local Prosperity Councils" that engage the OneUSDA team, Federal, State, regional organizations and public and private entities.





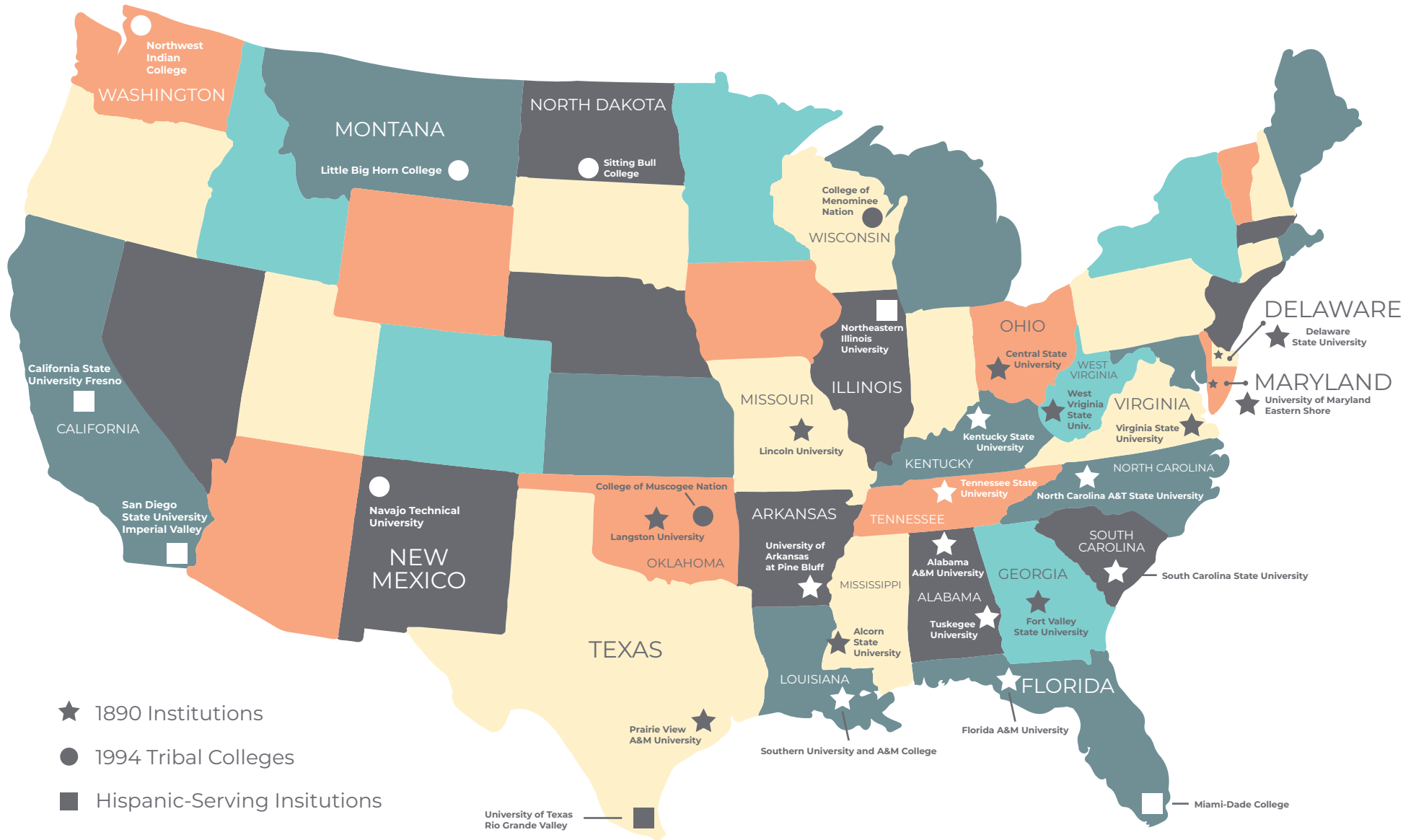
OFFICE OF PARTNERSHIPS & PUBLIC ENGAGEMENT

Centers of Community Prosperity Summit Process





Centers of Community Prosperity



- ★ 1890 Institutions
- 1994 Tribal Colleges
- Hispanic-Serving Institutions



The Centers of Community Prosperity convene state, federal and tribal partners, land-grant universities, Hispanic serving institutions, tribal colleges, historically black colleges and universities, national development organizations, non-profit organizations, faith leaders, veterans, and other strategic partners, to focus on the White House Rural Prosperity Taskforce recommendations, as well as the executive orders regarding the Center for Faith and Opportunity Initiatives, as well as the White House Opportunity and Revitalization Council.

National Community Prosperity Summit

- Hosted 4 National Community Prosperity Summits where over 1,000 institutional and community partners completed the Leadership in Economic Alliance Development (LEAD) workshop facilitated by extension personnel.
- Created approximately 500 asset maps and action plans to be implemented upon return to communities (LEAD curriculum).
- Convened participation from over 14 USDA agencies, as well as from the Office of Advocacy at the Small Business Administration, Housing and Urban Development, the Department of Veterans Affairs, the Department of Labor, the Federal Reserve Bank of Philadelphia, and the Federal Reserve Bank of Atlanta.

Success Stories from the Field

- EDGE was awarded a USDA Rural Business Development Grant to renovate a building in rural West Virginia to act as and education, training and aggregation center to support our regional food system in September 2018 in the amount of \$138,724.00. The Central Appalachian Network will also provide REDI assistance that will be used as an opportunity to identify solutions to improve the quality of life, food desert and opioid misuse issues in McDowell and Mercer County, West Virginia and Tazewell County, Virginia. They have also helped members of EDGE's Teach, Heal, Reclaim, Invest, enVision, Entrepreneurship (THRIVE) Program receive high tunnel assistance from NRCS.
- Penn State Harrisburg received a leadership endowment of \$2.5 million to establish the Douglas W. Pollock Center for Addiction Outreach and Research. The endowment will be used to establish the center which will provide outreach to veterans and community organizations and support them with the resources they need to be most successful in combating substance abuse.
- Fountain of Life Ministries recently received a grant from the Pa. Office of Attorney General in the amount of \$20,000.00. The grant is to help with a festival that benefits local organizations fighting the opioid epidemic. The event is called LifeFest and was held in August 2019 in Middletown Pa. (LifeFestrocks.com).



RURAL PROSPERITY

Rural America can make
our country great again.



Community and Economic Development

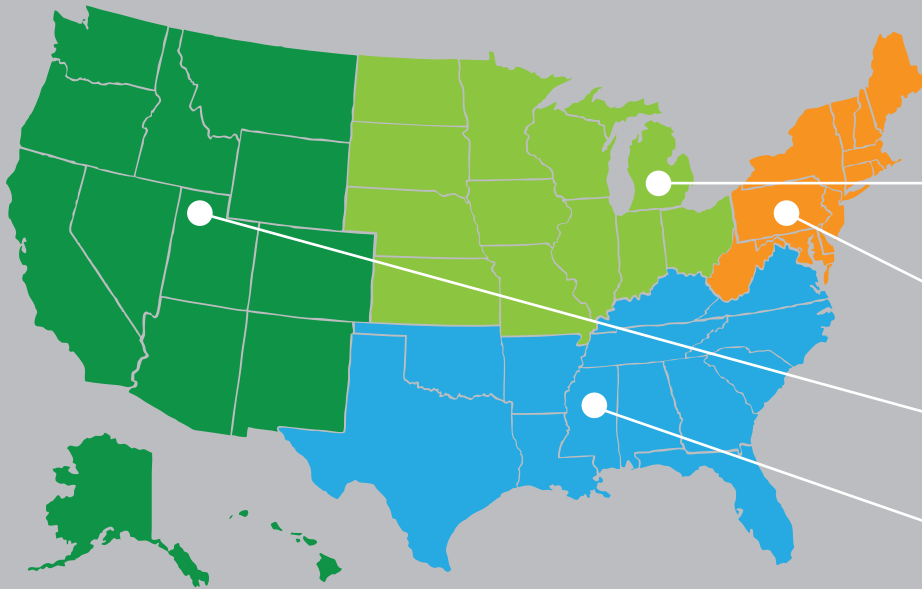
Connecting national, regional, and state resources for local impact

USDA
National Institute of Food and Agriculture

Regional Rural Development Centers

4

RESEARCH
+
EXTENSION



North Central Regional Center
for Rural Development

nccrd.msu.edu

Northeast Regional Center
for Rural Development

nercd.psu.edu

Western Rural
Development Center

wrdc.usu.edu

Southern Rural
Development Center

srdc.msstate.edu

Land-Grant
University
System

112
universities

1862

Public
universities

57

1890

Historically
black colleges
and
universities

19

1994

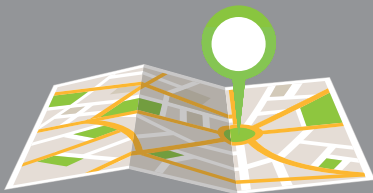
Tribal
colleges
and
universities

36

County Offices

Extension offices
with county agents in
or near approximately

3,000
counties in the USA



Learn more at rrdc.info

The Power of Partnership

Regional Rural Development Centers
 established by the Rural Development Act of 1972,
 build capacity in the Land-Grant University (LGU) System by:

- Convening research and/or the Cooperative Extension System teams around complex rural development issues
- Building collaborative networks/partnerships

- Serving as a regional hub for LGU partners, across state lines
- Leveraging a strong connection to federal resources

So that,

RESEARCH

EXTENSION

Generates data to better understand and address rural America's economic development problems

Translates university research to meet community needs

Provides potential solutions that communities can adopt to improve their situations

Responds to local needs

Facilitates community planning

Educates clientele at the local level



United States Department of Agriculture

National Institute of Food and Agriculture

NIFA LAND-GRANT COLLEGES AND UNIVERSITIES

