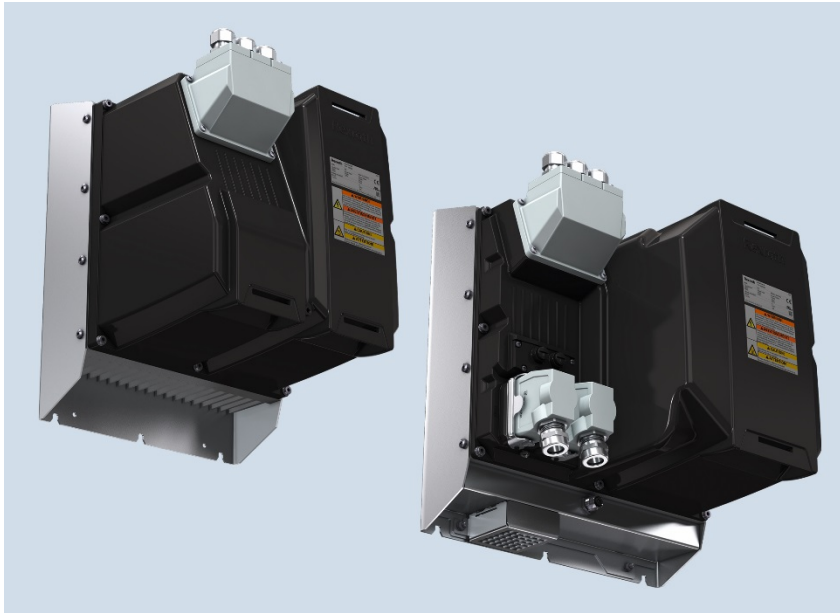


Press Release

IndraDrive Mi: Independent universal talent with new cooling possibilities

18/01/2018

For Immediate Use



Rexroth expands the range of applications of its IndraDrive Mi control cabinet-free drive system with additional cooling types for mains and supply modules.

Rexroth has already successfully moved the entire drive technology from the control cabinet to the machine. In addition to the IndraDrive Mi motor-integrated and motor-near drives, the company has developed decentralized supply and mains modules that allow machine manufacturers to install all electrical drive components directly on the machine. Now Rexroth has equipped these modules with new cooling options for a wide range of production environments and, in doing so, also expanded the range of applications.

The control cabinet-free IndraDrive Mi drive system allows for the realization of a completely independent drive solution. The supply unit that can be directly integrated into the machine makes this possible. Rexroth has now equipped these mains and supply modules with additional cooling options. Convection cooling and forced air cooling options are now also available in addition to the thermal interface for cold plate mounting or insulated mounting. These two types of cooling do not require any process water for cooling and allow for flexible use in a wide range of production environments. Applications for which no process water is available, such as in conveying or

Contact for Journalists:
Bosch Rexroth Canada
David Lopes
3426 Mainway Drive
Burlington, ON
Telephone (905) 315-6043
Fax (905)335-4184
david.lopez2@boschrexroth.ca

Bosch Rexroth Canada
Karen Maiden
3426 Mainway Drive
Burlington, ON
Telephone (905) 315-6044
Fax (905)335-4184
karen.maiden@boschrexroth.ca

Press Release

handling technology, in food and packaging technology or also to some extent in the printing and wood industry, do not require any additional recooling when using these new cooling options.

18/01/2018

For Immediate Use

All mains connection components that were previously placed in the control cabinet are now realized in IP65 in the IndraDrive Mi and can be directly installed in the machine. The mains filter, mains choke and mains contactor are integrated in the KNK03 mains module to supply direct power from the grid. The regenerative KMV03 power supply module with control electronics, braking resistor and brake transistor has completely replaced the power supply and the control electronics in the control cabinet.

About Bosch Rexroth

Economical, precise, safe, and energy efficient: drive and control technology from Bosch Rexroth moves machines and systems of any size. The company bundles global application experience in the market segments of Mobile Applications, Machinery Applications and Engineering, and Factory Automation to develop innovative components as well as tailored system solutions and services. Bosch Rexroth offers its customers hydraulics, electric drives and controls, gear technology, and linear motion and assembly technology all from one source. With locations in over 80 countries, more than 29,500 associates generated sales revenue of approximately 5 billion euros (\$5.5 billion) in 2016.

To learn more, please visit www.boschrexroth.ca.

About Bosch

Having established a regional presence in 1906 in North America, the Bosch Group employs nearly 32,800 associates in more than 100 locations, as of December 31, 2016. In 2016 Bosch generated consolidated sales of \$13.7 billion in the U.S., Canada and Mexico. For more information, visit www.bosch.ca, www.boschusa.com and www.bosch.com.mx.

The Bosch Group is a leading global supplier of technology and services. The company employs roughly 390,000 associates worldwide (as of December 31, 2016) and generated sales of 73.1 billion euros (\$80.9 billion) in 2016. Its operations are divided into four business sectors: Mobility Solutions, Industrial Technology, Consumer Goods, and Energy and Building Technology. As a leading IoT company, Bosch offers innovative solutions for smart homes, smart cities, connected mobility, and connected industry. It uses its expertise in sensor technology, software, and services, as well as its own IoT cloud, to offer its customers connected, cross-domain solutions from a single source. The Bosch Group's strategic objective is to create solutions for a connected life, and to improve quality of life worldwide with products and services that are innovative and spark enthusiasm. In short, Bosch creates technology that is "Invented for life." The Bosch Group

Contact for Journalists:
Bosch Rexroth Canada
David Lopes
3426 Mainway Drive
Burlington, ON
Telephone (905) 315-6043
Fax (905)335-4184
david.lopes2@boschrexroth.ca

Bosch Rexroth Canada
Karen Maiden
3426 Mainway Drive
Burlington, ON
Telephone (905) 315-6044
Fax (905)335-4184
karen.maiden@boschrexroth.ca

Press Release

comprises Robert Bosch GmbH and its roughly 440 subsidiaries and regional companies in some 60 countries. Including sales and service partners, Bosch's global manufacturing, engineering, and sales network covers nearly every country in the world. The basis for the company's future growth is its innovative strength. At 120 locations across the globe, Bosch employs 59,000 associates in research and development.

Additional information is available online at www.bosch.ca, www.bosch-press.com, <http://twitter.com/BoschPresse>.

18/01/2018

For Immediate Use

Contact for Journalists:
Bosch Rexroth Canada
David Lopes
3426 Mainway Drive
Burlington, ON
Telephone (905) 315-6043
Fax (905)335-4184
david.lopes2@boschrexroth.ca

Bosch Rexroth Canada
Karen Maiden
3426 Mainway Drive
Burlington, ON
Telephone (905) 315-6044
Fax (905)335-4184
karen.maiden@boschrexroth.ca