



# Ontario Concrete & Drain Contractors Association

## Package Summary- 1.5 m Extension of The Laterals Best Practice

On behalf of our Association, we would like to extend our gratitude to the review committees of the Organizations that have provided support within this package, and to the Regions and the Municipalities that have recognized or are in the process of effecting change as a result of our **Safety** Best Practice initiative, it demonstrates industry and governmental concern for infrastructure damage prevention, and most importantly, **Worker & Public Safety!**

Over the years we have been successful in promoting Standard Drawings which reflect our Best Practice in all of Halton Region, Peel Region, Durham Region, 5 out of 9 municipalities in York Region, several Municipalities in Simcoe & several municipalities in South Central Ontario.

Although the OCDCA has been successful in demonstrating the merits of our Best Practice and many municipalities have adopted the **1.5 m Extension of the Laterals** as their primary Standard Drawing, there still needs to be work done to Standardize this Safety method of installation in all municipalities.

Municipal affairs at times can be very challenging, but it is encouraging when respected industry Stakeholders lend their support and those Municipalities which are committed to progress make positive change, it is always impactful and well received, and we thank the following supporters:

### Enclosed in the accompanying support package you will find:

- **OBC Ontario Building Code- Recognition of 1.5 m Lateral Extensions**
- **OCDCA's Position on Water Service Connections**
- **Best Practice-The Problem/Solution/Pictorials & Sample Drawing**
- **Example Drawings from Durham/Peel/York**
- **Labourers Union Local 183 & Operating Engineers 793 Support**
- **MOL Ministry Of Labour Support**
- **TSSA Support**
- **ORCGA Ontario Regional Common Ground Alliance Support**
- **OSWCA & GTSWCA Sewer & Watermain Support**
- **BILD Building Industries& Land Development Support**
- **OHBA Ontario Home Builders Association Support**
- **RESCON Residential Construction Council Of Ontario Support**
- **OPIA Ontario Plumbing Inspectors Association Support & OPIA Articles**
- **IHSA PLMHSC Provincial Labour-Management Health & Safety Committee**
- **IHSA Infrastructure Health & Safety Association**
- **OBOA Journal Issue 104 December 2014- Extension of Laterals Article**
- **ORCGA Ontario Regional Common Ground Alliance Best Practice 1-16 OCDCA**
- **TACC, Niran & Condeland Cost Impact(negligible on total developmental costs)**
- **Safety First Consulting Support**

**To view the 6 min video, please go to the following link <http://ocdca.ca/extsewerlats.html>  
Thank you for your time in reviewing the 1.5 m Extension of the Laterals Best Practice!**

400 Creditstone Road, Unit 6, Concord, Ontario L4K 3Z3

Website: [www.ocdca.ca](http://www.ocdca.ca) E-mail: [office@ocdca.ca](mailto:office@ocdca.ca) Tel: (905) 660-7676 Fax: (905) 660-7611





# Ontario Concrete & Drain Contractors Association

## Ontario Building Code

### OCDCA News Bulletin

#### ➤Sewer Lateral Extensions◀

**On January 1, 2014**, the new 2012 Building Code (O. Reg. 332/12) came into force. Building permits applied for on or after that date must comply with the updated requirements of the 2012 Building Code. New provisions added to the 2012 Building Code include the new definition for "sewer lateral extension" that relates to the connection between the public sewer and building sewer, and the new provision regarding inspection and testing of a sewer lateral extension.

#### **Division A - 1.4.1.2. Defined Terms**

**Sewer Lateral Extension** means an extension of a public sewer that connects to a storm building sewer or sanitary building sewer 1.5 m beyond the property line and that serves not more than one property.

#### **Division B - 7.3.6.1. Tests and Inspection of Drainage or Venting Systems**

(6) A **sewer lateral extension** need not be tested and inspected if the sewer lateral extension was constructed, tested and inspected at the time of the installation of the public sewer.

In summary, as the 2012 Building Code regards a sewer lateral extension "...as an extension of a public sewer...", the Building Code requirements applicable to the storm building sewer or sanitary building need not apply to the sewer lateral extension, including testing and inspecting, if the sewer lateral extension was constructed, tested and inspected at the time of the installation of the public sewer.

*The OCDCA is pleased to see, that our efforts to create Safe work environments, protect the public, and the promotion of infrastructure damage prevention has finally been recognized by the Ontario Building Code and the Construction Industry overall.*

*We would like to thank the Municipalities that have adopted the "1.5m Extension of the Laterals Safety Best Practice" and have changed their standard drawings to reflect it, and we encourage all other municipalities to follow suit in providing the same Safety Standards.*

400 Creditstone Road, Unit 6, Concord, Ontario L4K 3Z3

**Website:** [www.ocdca.ca](http://www.ocdca.ca) **E-mail:** [office@ocdca.ca](mailto:office@ocdca.ca) **Tel:** (905) 660-7676 **Fax:** (905) 660-7611



# Ontario Concrete & Drain Contractors Association

## ➤➤ Important Note ◀◀

### Re: OCDCA Position on Water Service Connections

Dear Sirs:

The OCDCA proposes, and it would satisfy our needs to create safe working environments, that the curb stop (for the water service) and the test fittings (for the sanitary and storm services) remain at the property line. ONLY the pipe for the Sanitary and Storm service shall be extended into the property line by 1.5 meters and plugged. Moving these deeper services away from the location of the utilities will provide us with a greater opportunity to enhance worker safety and utility damage prevention. This work should be carried out by the Sewer & Watermain contractor at the time the “new” subdivision is being serviced for the installation of the underground services and roads.

For any further concerns or questions, please do not hesitate to contact our Association office.

Respectfully,

Robert A. Celsi  
Executive Director, OCDCA





## Ontario Concrete & Drain Contractors Association

400 Creditstone Road, Unit 6, Concord, Ontario L4K 3Z3

Tel: (905) 660-7676 Fax: (905) 660-7611

www.ocdca.ca

# BEST PRACTICE EXTENSION OF SEWER LATERALS

---

### **Current Situation:**

In some municipalities, unfortunately the practice remains that the Storm & Sanitary Sewer and Watermain lines are installed prior to and under the road/boulevard/sidewalk, with lateral extensions taken off each line to provide service to each building in the development. These lateral extensions are typically terminated and capped underground at the property line or lot line.

Main Utility lines, such as natural gas, telephone, hydro, cable television, and fibre optics, are then installed, and will eventually provide service to each building. Their location is typically much closer to the surface than the Sewer and Water lines since they are not adversely affected by frost, and very close to the street side of the property line or lot line. Proximity to the lot line is maintained so as to minimize potential damage to the road and disruption to traffic if the utility lines need to be accessed after the development work is complete.

### **The Problem:**

Proximity to the lot line of the Utility Services creates at least two hazards for contractors accessing the Capped Lateral Extensions when time comes to make the connection to the buildings. First, since the Utility Services are virtually directly above the Capped Lateral Extensions, there is a high risk of them being struck during excavation. Damage to Utility Services can be not only financially costly, but can have fatal consequences as well.

Second, this intersection of buried services often results in an excavation with a very steep bank, a situation made even more potentially dangerous by the fact that the soil is previously excavated and therefore not predictably stable. Increasing the excavation slope would, in the vast majority of cases, lead to completely exposing many - if not all - of the Utility Services.





## Ontario Concrete & Drain Contractors Association

400 Creditstone Road, Unit 6, Concord, Ontario L4K 3Z3

Tel: (905) 660-7676 Fax: (905) 660-7611

[www.ocdca.ca](http://www.ocdca.ca)



This photo illustrates how the capped laterals are positioned almost directly under the utility infrastructure. This close proximity makes it difficult to attain the proper slope and represents the typical and potentially dangerous situation the Machine Operator and Concrete and Drain worker are confronted with on a daily basis when excavating / digging to expose the laterals which were terminated at the Property line.

This is the inherent problem with the Standards that some municipalities provide to the consulting Engineers and which their design must adhere to. These standards unfortunately are what the Sewer and Watermain Contractors must adhere to even though they could quite easily extend their scope of work and eradicate the problem as illustrated by the following solution.





## Ontario Concrete & Drain Contractors Association

400 Creditstone Road, Unit 6, Concord, Ontario L4K 3Z3

Tel: (905) 660-7676 Fax: (905) 660-7611

www.ocdca.ca

### **The Solution:**

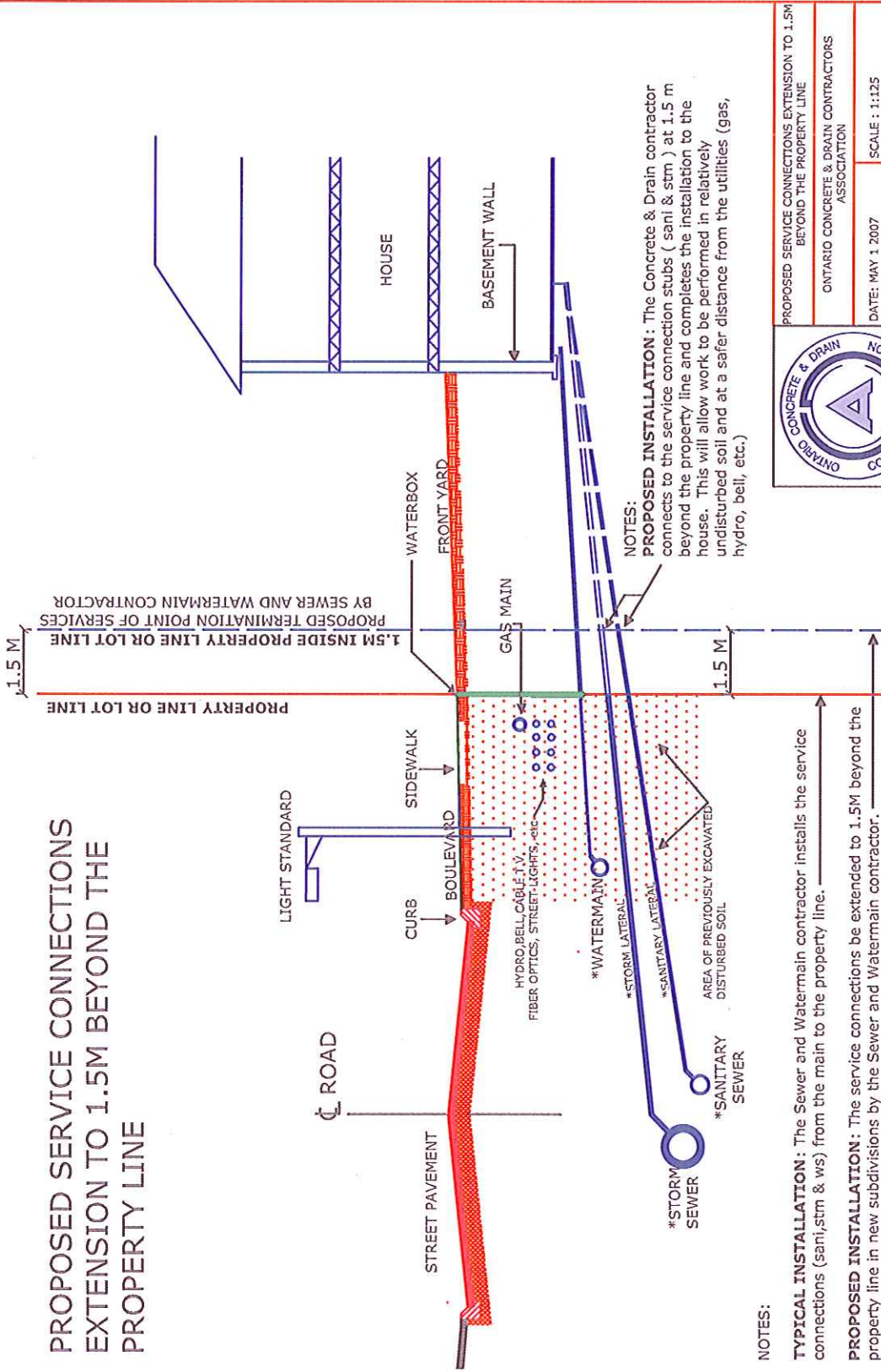
Extending the laterals for storm and sanitary drains 1.5m inside the lot line when the Storm & Sanitary Sewer lines are installed will greatly reduce hazards when time comes to bring the connection into the building. The Capped Lateral Extensions will be at least 1.5m away from the intersection point with the underground utilities, allowing them to remain undisturbed during excavation, and allowing the banks of the excavation to be cut with sloped sides.



This photo clearly illustrates the safe conditions under which the Machine Operator was able to perform his excavation and the worker was able to dig and expose the capped lateral connections in a properly sloped trench, relatively undisturbed soil and 1.5m away from Utility infrastructure. The OCDCA is committed to providing safe work environments for its workforce and the standardization of this method throughout all Municipalities would achieve this safety goal!



# PROPOSED SERVICE CONNECTIONS EXTENSION TO 1.5M BEYOND THE PROPERTY LINE



**NOTES:**  
**PROPOSED INSTALLATION:** The Concrete & Drain contractor connects to the service connection stubs ( sani & stm ) at 1.5 m beyond the property line and completes the installation to the house. This will allow work to be performed in relatively undisturbed soil and at a safer distance from the utilities ( gas, hydro, bell, etc.)

**NOTES:**  
**TYPICAL INSTALLATION:** The Sewer and Watermain contractor installs the service connections (sani,stm & ws) from the main to the property line.  
**PROPOSED INSTALLATION:** The service connections be extended to 1.5M beyond the property line in new subdivisions by the Sewer and Watermain contractor.



PROPOSED SERVICE CONNECTIONS EXTENSION TO 1.5M BEYOND THE PROPERTY LINE	
ONTARIO CONCRETE & DRAIN CONTRACTORS ASSOCIATION	
DATE: MAY 1 2007	SCALE: 1:125
DWG No 001	BY: M.R.D.D



## BEST PRACTICE EXTENSION OF SEWER LATERALS

---

### **Practice Statement:**

Sewer laterals should be installed from the main to 1.5 m beyond the property line in new subdivisions.

### **Practice Description:**

For purposes of health and safety, damage prevention and construction efficiency, sewer laterals installed in new subdivisions should be extended from the main to 1.5 m beyond the property line and plugged with a water tight plug. This allows workers installing the connections from the stubs to the homes/building, to establish a safe stable work environment and minimizes impact to the existing facility infrastructure.

### **Examples of Practices:**

To extend the Storm and Sanitary Laterals is a practice throughout the Municipalities within the Regions of Durham, Halton, Peel and several in York, several in Simcoe and surrounding municipalities.

### **Benefits:**

Extending connections 1.5 m beyond the property line:

- enables contractors to pick up the connections in more stable soil conditions
- allows for proper trench sloping
- reduces the potential for cave-ins
- provides for safer excavation conditions
- reduces potential damage to existing facility infrastructure.

### **References:**

Region of Durham S-301

Region of York, City of Vaughan STD.DWG. I-1

Region of Halton, Town of Oakville STD 7-1

Region of Peel STD.DWG.NUMBER 2-4-4

Extension of the Laterals Best Practice Version 3 Document Prepared by:

Robert Celsi, Executive Director, OCDCA,

Ray DiDonato P.Eng, VP, OCDCA,

Frank Tucci, Chair Work Safe Committee, OCDCA

Daniel Fiorini, CET, CSAO Low Rise Labour Management Health & Safety Committee

Planning & Design Committee ORCGA & Robert Celsi (last page)





February 7, 2006

Ontario Concrete & Drain Contractors Association  
400 Creditstone Road, Unit 6  
Concord ON L4K 3Z3

The Regional  
Municipality  
of Durham

Works Department

605 ROSSLAND RD. E.  
P.O. BOX 623  
WHITBY ON L1N 6A3  
CANADA  
905-668-7711  
Fax: 905-668-2051  
E-mail:  
works@region.durham.on.ca

[www.region.durham.on.ca](http://www.region.durham.on.ca)

C. R. Curtis, P. Eng., MBA  
Commissioner of Works

Attention: Robert A. Celsi, Executive Director

Dear Sir:

**RE: Sanitary Sewer House Connections in New Subdivisions**

The Region of Durham Design Specification for Regional Services  
Drawing S-301 for Sanitary Sewer House Connections states in Note 4,  
that:

**"The sewer connection shall be laid from the main to 1.5  
metres beyond the property line in new subdivisions only."**

Should you have any further questions on this matter, please do not  
hesitate to contact the undersigned at 905-668-7711; Ext. 3413.

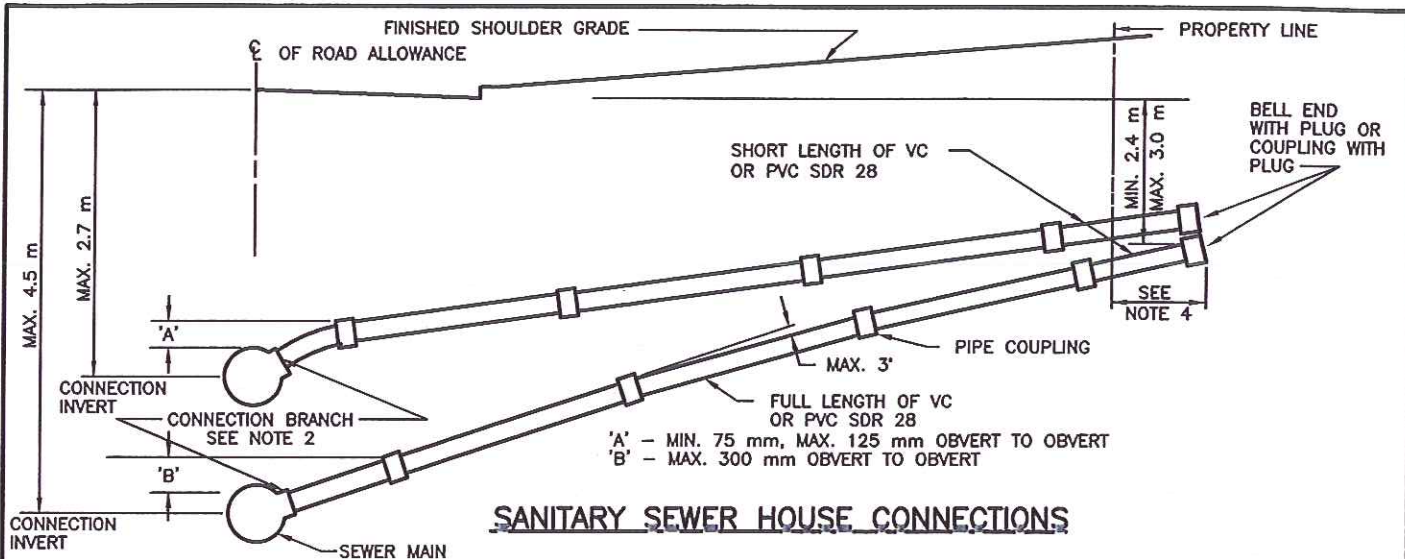
Yours truly,

Dale Clemens, Chair  
Roads, Watermain and Sewers Standardization Sub-Committee

/dc/ps

c: Uldis Siksna, Maintenance Operations Manager

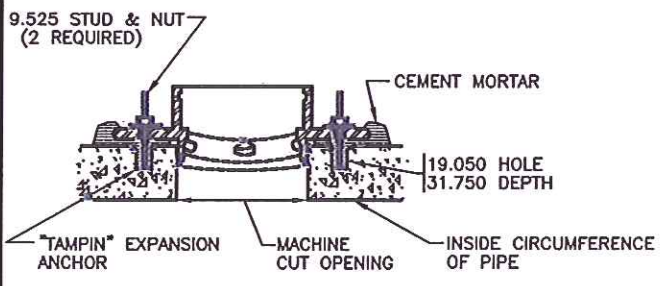




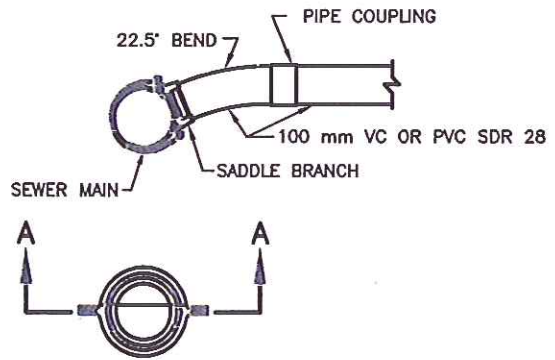
**SANITARY SEWER HOUSE CONNECTIONS**

**NOTES:**

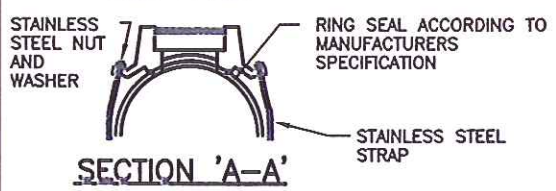
1. IN NEW SUBDIVISIONS THE SANITARY SEWER AND WATER SERVICE CONNECTIONS SHALL BE INSTALLED IN SEPARATE TRENCHES. IN CASES WHERE THE SEPARATE TRENCH INSTALLATION IS NOT PRACTICAL, SANITARY SEWER AND WATER SERVICE CONNECTIONS MAY BE INSTALLED IN A COMMON TRENCH AS PER DETAIL 'A'.
2. IN NEW SUBDIVISIONS ALL CONNECTIONS TO THE SEWERS ARE TO BE MADE WITH A FACTORY MANUFACTURED 'T'. FOR CONNECTIONS TO EXISTING SANITARY SEWERS, OTHER THAN PVC A SADDLE CONNECTION MAY BE USED. MORTAR-ON SADDLES SHALL BE USED ON CONCRETE PIPE GREATER THAN 450 mm DIAMETER. CONNECTIONS TO EXISTING PVC SEWERS SHALL BE MADE WITH A FACTORY MANUFACTURED TEE OR AN APPROVED SADDLE. CONNECTIONS TO EXISTING A.B.S. TRUSS PIPE SHALL BE MADE WITH A SOLVENT WELDED SADDLE. A FACTORY MANUFACTURED WYE SHALL BE USED IN THE FIRST UPSTREAM LEG FOR ALL SEWER CONNECTIONS.
3. 45° STRAP ON SADDLE SHALL BE USED ON SEWERS OTHER THAN PVC PIPE, WHEN LATERAL INTERSECTS SEWER MAIN AT AN ACUTE ANGLE.
4. THE SEWER CONNECTION SHALL BE LAID FROM THE MAIN TO 1.5 m BEYOND THE PROPERTY LINE IN NEW SUBDIVISIONS ONLY.
5. THE END OF ALL SEWER PIPE SHALL BE MACHINED. ALL CUTTING AND MACHINE SHALL BE DONE BY CONTRACTOR.
6. A COUPLING SHALL BE INSTALLED AT DEAD END AND SHALL BE PLUGGED USING A WATER TIGHT PLUG.
7. DEFLECTIONS OF PIPE AT JOINTS IS NOT TO EXCEED 75 mm I.E.: 150 mm MAXIMUM DEFLECTION FOR A 3 m LENGTH OF ASBESTOS CEMENT PIPE  
75 mm MAXIMUM DEFLECTION FOR 1.8 m LENGTH OF VETRIFIED CLAY PIPE
8. PIPE COUPLING SHALL BE 'RING-TITE' OR EQUIVALENT. PVC SHALL BE BELL AND SPIGOT JOINT.
9. REFER TO STD. S-401 FOR BEDDING REQUIREMENTS.
10. WHEN MORTAR-ON SADDLES ARE USED, A MACHINE CUT OPENING SHALL BE MADE IN THE SANITARY SEWER WITH A CORING MACHINE.
11. 2% MIN. GRADE TO 10% MAX. GRADE FOR 100 mm DIA. PIPE.
12. 1% MIN. GRADE TO 10% MAX. GRADE FOR 150 mm DIA. PIPE.



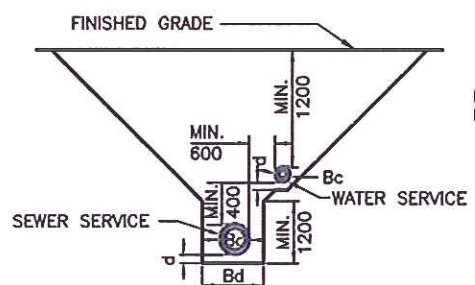
**MORTAR-ON SADDLES FOR CONCRETE MAINS OVER 450 mm DIAMETER**



**TOP VIEW**



**CAST-IRON SADDLE BRANCH FOR CONNECTION TO EXISTING MAINS OTHER THAN PVC**



**DETAIL 'A' COMMON TRENCH DETAIL**

ALL DIMENSIONS IN MILLIMETRES EXCEPT WHERE NOTED.



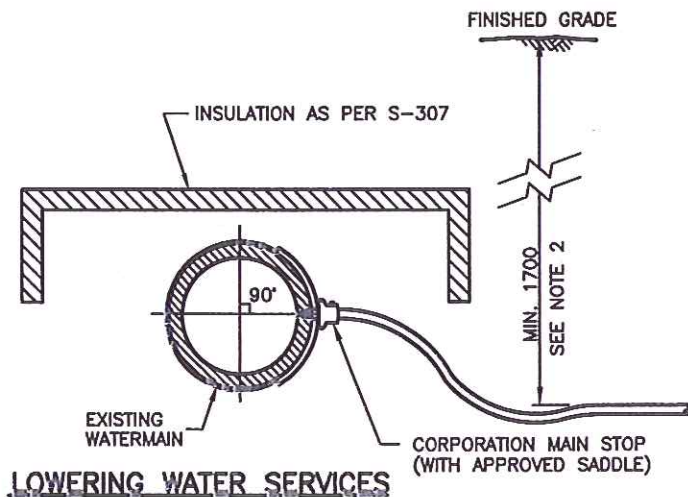
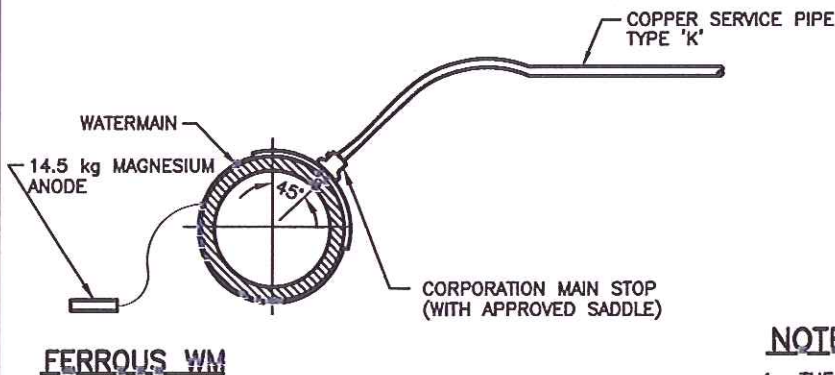
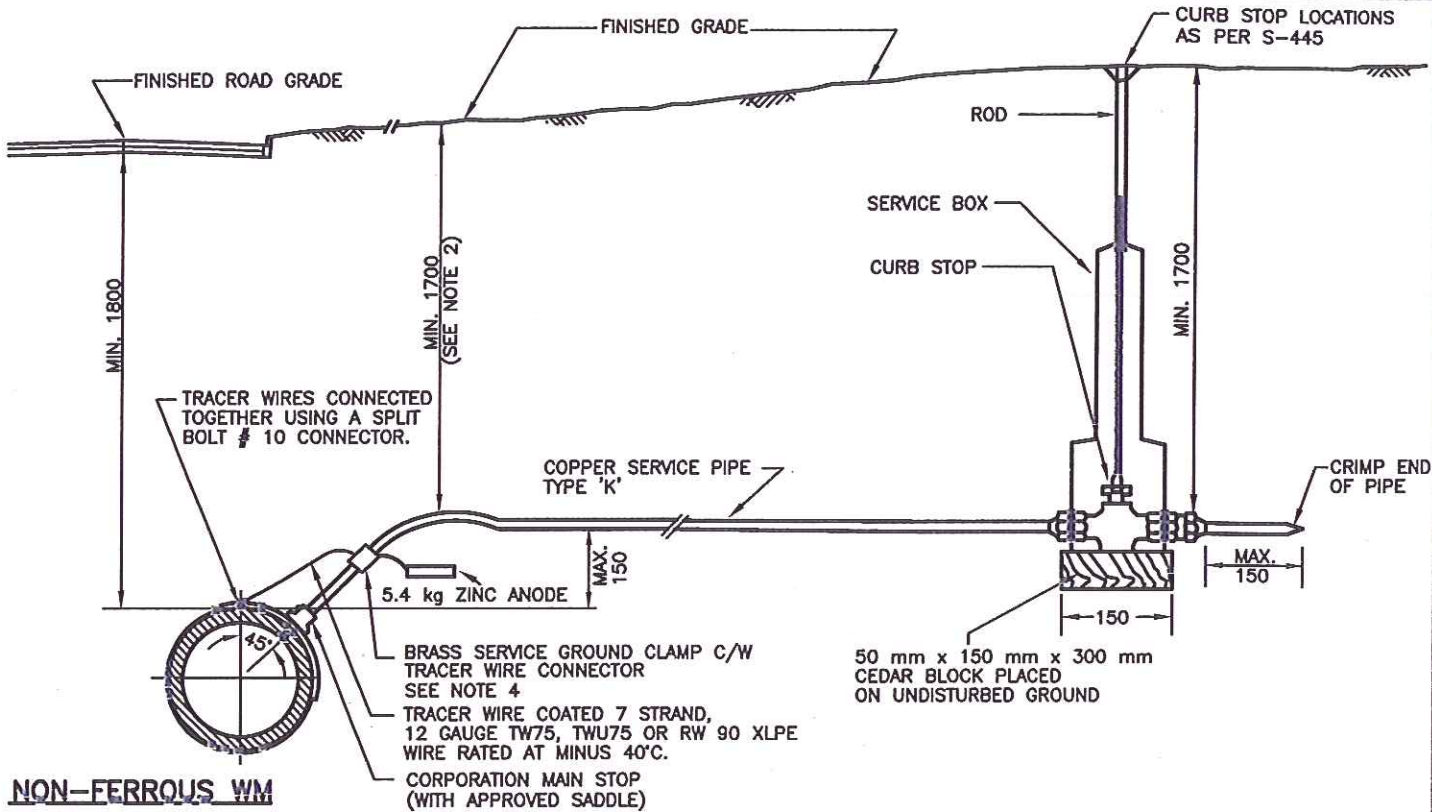
WORKS DEPARTMENT

**SANITARY SEWER HOUSE CONNECTIONS AND SADDLES (100 mm & 150 mm PIPE)**

DWG. DATE:	1981 04
REVISION NO.:	11
REV. DATE:	2006 04
SCALE:	N.T.S.

**S-301**





**NOTES**

1. THE WATER CONNECTION SHALL BE LAID FROM THE MAIN TO 150 mm BEYOND THE PROPERTY LINE, IN NEW SUBDIVISIONS ONLY.
2. HORIZONTAL GOOSE NECK SHALL BE USED WHEN COVER LESS THAN 1700 mm.
3. WATERMAIN SHALL BE TAPPED UNDER PRESSURE.
4. SERVICE GROUND CLAMPS AND SPLIT BOLT SHALL BE WRAPPED WITH ELECTRICAL PUTTY.
5. ANODE SHALL BE PLACED AT LEAST 1.0 m AWAY FROM THE SERVICE AND AS DEEP AS THE BOTTOM OF THE SERVICE.
6. ANODE SHALL BE LOCATED BETWEEN THE MAIN STOP AND CURB STOP.
7. PLUMBING CONTRACTOR TO REMOVE TAIL PIECE AND HOOK UP TO CURB STOP.
8. CATHODIC PROTECTION, BONDING CABLE AND TRACER WIRE SHALL BE AS PER S-435, S-439.
9. MINIMUM SEPARATION DISTANCE BETWEEN TAPPED COUPLINGS SHALL BE 1.0 m.
10. COUPLINGS SHALL NOT BE PERMITTED BETWEEN THE MAIN STOP AND THE CURB STOP WITHOUT PERMISSION OF THE REGION OF DURHAM,

ALL DIMENSIONS IN MILLIMETRES EXCEPT WHERE NOTED.



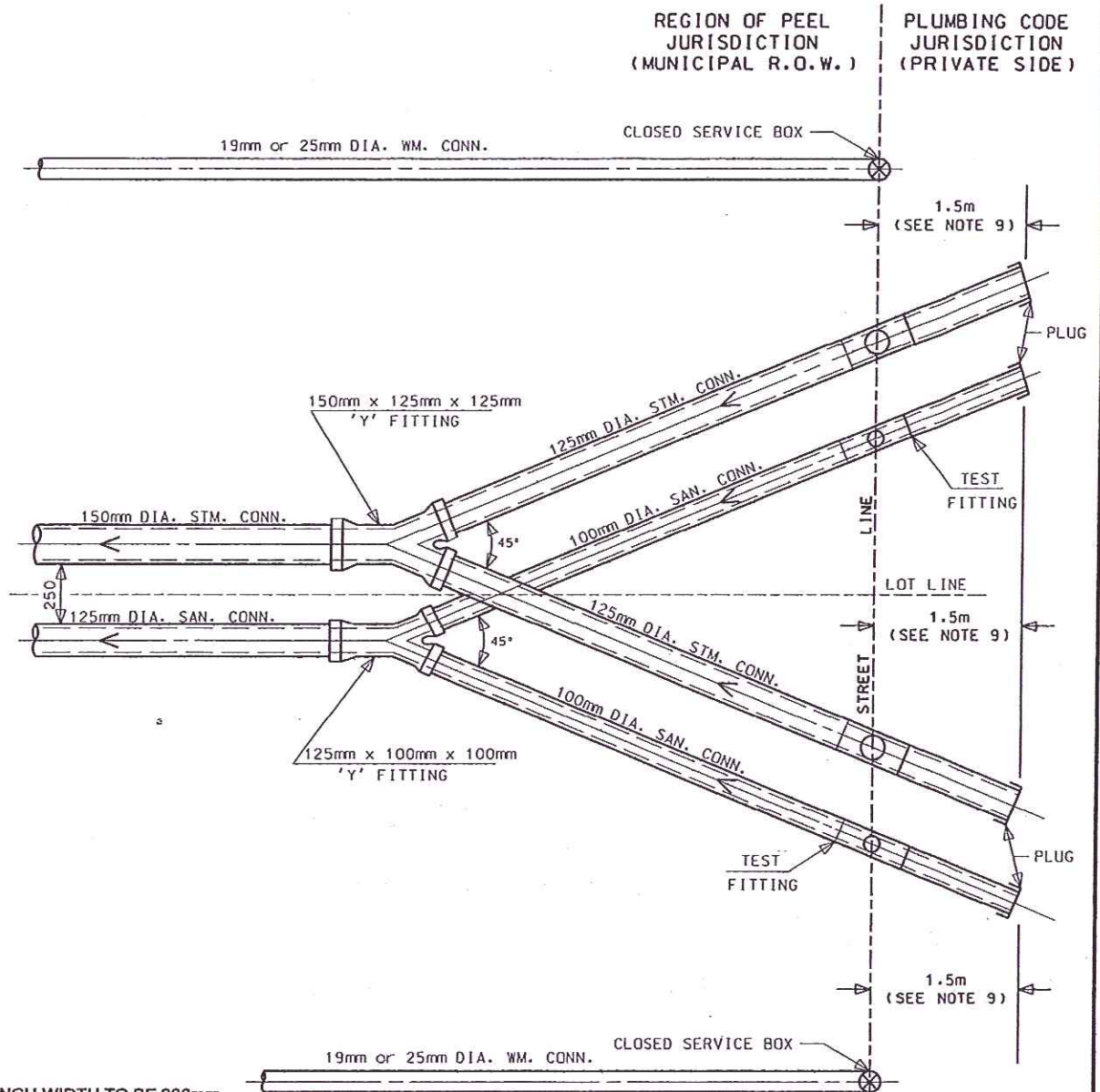
WORKS DEPARTMENT

**19 mm AND 25 mm COPPER  
WATER SERVICE**

DWG. DATE:	1981 04
REVISION NO.:	17
REV. DATE:	2005 05
SCALE:	N.T.S.

**S-410**





**NOTES**

1. MINIMUM TRENCH WIDTH TO BE 900mm.
2. 19mm CRUSHED STONE BEDDING TO BE USED FROM BASE OF EXCAVATION TO SPRING LINE OF UPPER PIPE FROM MAINLINE TO TEST FITTING.
3. 125mm DIA. TEST FITTING TO BE MARKED "SAN".
4. SANITARY CONNECTION PIPE TO BE ANY COLOUR EXCEPT WHITE.
5. STORM CONNECTION TO BE ON THE LEFT WHEN FACING THE HOUSE.
6. SANITARY CONNECTION MUST INCLUDE TEST FITTING AT PROPERTY LINE.
7. SINGLE SANITARY SERVICE CONNECTIONS SHALL BE 125mm.
8. MAIN STOP MUST BE PLACED AT PROPERTY LINE FOR WATER SERVICE.
9. STORM & SANITARY CONNECTIONS SHALL BE LAID FROM THE MAIN TO 1.5m BEYOND THE STREET LINE. THE LOCAL MUNICIPALITY IS RESPONSIBLE FOR THE STORM SEWER AND ALL SERVICES BEYOND THE STREET LINE ARE THE JURISDICTION OF THE ONTARIO PLUMBING CODE.

**Region of Peel**  
Working for you

**PUBLIC WORKS  
STANDARD DRAWING**

REV. DATE: JUNE 2008

APPROVED BY

DRAWN BY

A.M.

P.W.

STD. DWG. NUMBER

SCALE

**2-4-4**

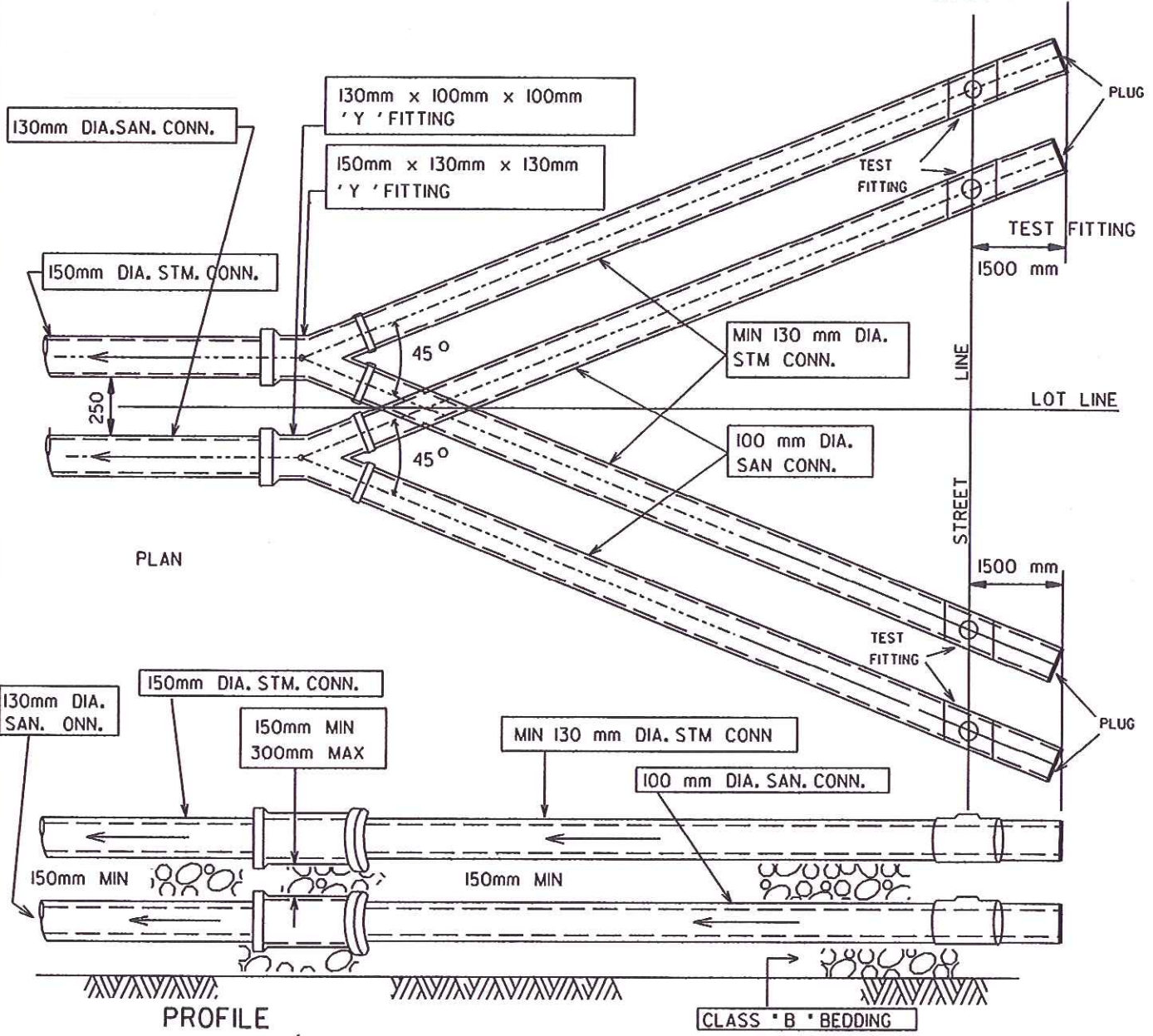
N.T.S.

**NEW DEVELOPMENT CONNECTIONS  
EXTENDING SERVICES BEYOND PROPERTY LINE**



**METRIC**  
ALL DIMENSIONS IN MILLIMETRES

CITY OF MISSISSAUGA REGULATED BY  
TRANSPORTATION AND WORKS THE ONTARIO  
DEPT. JURISDICTION BUILDING CODE  
(MUNICIPAL R.O.W.) (PRIVATE SIDE)  
(SEE NOTE #7)



**NOTES**

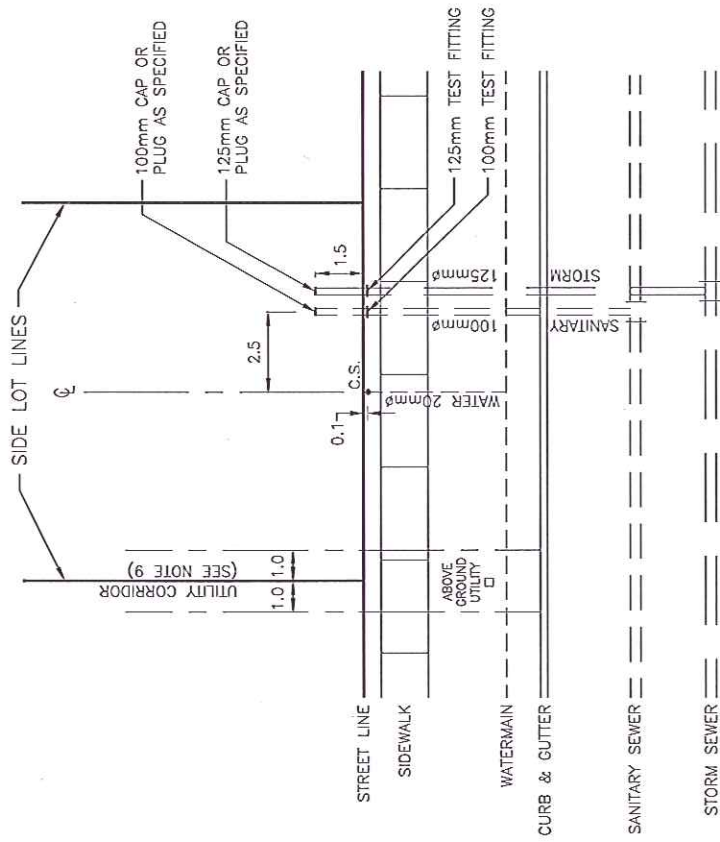
1. MINIMUM TRENCH WIDTH TO BE 900mm
2. CLASS 'B' BEDDING TO BE USED TO SPRING LINE OF UPPER PIPE.
3. SANITARY TEST FITTINGS AND PLUGS TO BE MARKED 'SAN' STORM TEST FITTINGS AND PLUGS TO BE MARKED 'STM'
4. THE SANITARY CONNECTION SHALL ALWAYS BE BELOW THE STORM CONNECTION.
5. THE SANITARY CONNECTION SHALL ALWAYS BE ON THE RIGHT WHEN FACING THE HOUSE
6. REFER TO OPSD 1006.020 FOR OTHER DETAILS
7. THE STORM AND SANITARY CONNECTIONS SHALL BE LAID FROM THE MAIN TO 1500mm BEYOND THE STREET LINE ON THE PRIVATE SIDE. THE JURISDICTION OF THE STORM SEWER AND STORM CONNECTIONS WITHIN THE MUNICIPAL ROW IS THAT OF THE CITY OF MISSISSAUGA TRANSPORTATION AND WORKS DEPARTMENT, WHILE THE SERVICES LOCATED ON THE PRIVATE SIDE ARE REGULATED BY THE ONTARIO BUILDING CODE, AND AS SUCH, ARE UNDER THE JURISDICTION OF THE CITY OF MISSISSAUGA CHIEF BUILDING OFFICIAL, BUILDING DIVISION.



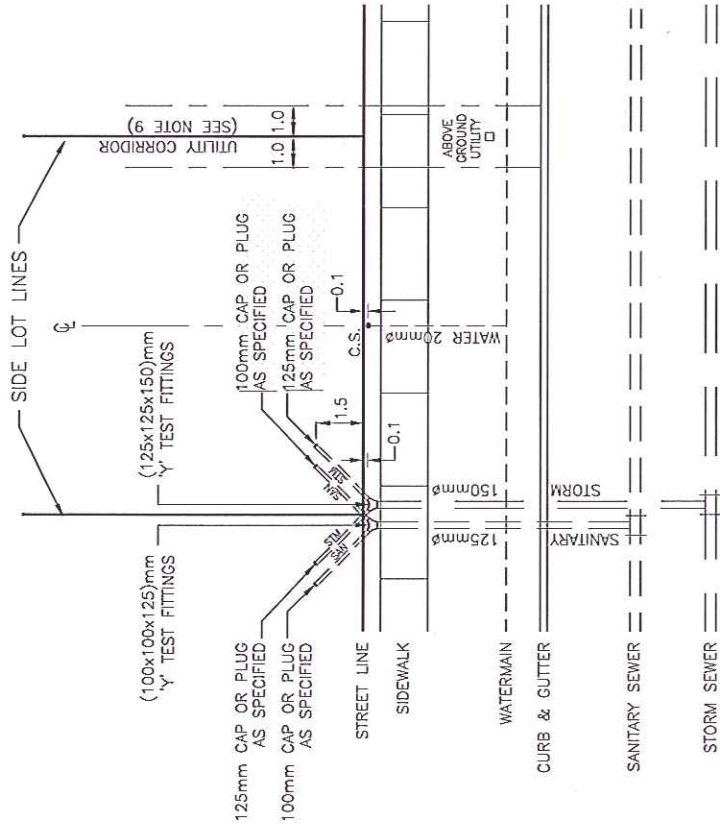
**STANDARD  
SEWER CONNECTIONS IN  
COMMON TRENCH**

EFF. DATE	2002-01-01	SCALE	N.T.S.
REV.	7	MAY 2009	STANDARD No. 2115.050





### SINGLE SEWER & SINGLE WATER SERVICE



### SINGLE WATER & DOUBLE SEWER SERVICE

**m** DIMENSIONS IN METRES  
EXCEPT AS NOTED

4.	REVISED NOTES	MAY/11
3.	EXTEND SEWER CONNECTIONS 1.5m BEYOND PROPERTY LINE	NOV/10
2.	REVISIONS	DATE
1.		



CITY OF VAUGHAN ENGINEERING STANDARD

## RESIDENTIAL SERVICE CONNECTIONS

NOT TO SCALE  
DESIGNED: ENG. DEPT.  
REVISION: \_\_\_\_\_ DATE: MARCH 2004

STD. DWG.  
**I-1**

#### NOTES

1. WATER SERVICE CONNECTIONS AND CURB STOPS SHALL BE AS DETAILED ON O.P.S.D. 1104.010 OR 1104.020.
2. SANITARY AND STORM SERVICE CONNECTIONS SHALL BE AS PER O.P.S.D. 1006.010 OR 1006.020 EXCEPT THAT THE CONNECTIONS SHALL EXTEND 1.5m BEYOND THE PROPERTY LINE AND SHALL BE PLUGGED OR CAPPED AT THAT POINT.
3. ALL PVC SANITARY LATERAL PIPE SHALL BE WHITE IN COLOUR.
4. SANITARY TEST FITTINGS SHALL BE LETTERED 'SAN'. FITTINGS SHALL BE CROWLE TYPE WITH PLUGS OR EQUAL.
5. ALL PVC STORM LATERAL PIPE SHALL BE ANY COLOUR BUT WHITE.
6. STORM TEST FITTING SHALL BE LETTERED 'STM'. FITTINGS SHALL BE CROWLE TYPE WITH PLUGS OR EQUAL.
7. MARKERS SHALL BE PLACED AT ENDS OF 'SAN' AND 'STM' CONNECTIONS.
8. THE WATER SERVICE CURB STOP IS TO BE LOCATED IN THE GRASSED PORTION OF THE FRONT YARD.
9. IN THE CASE OF ZERO-LOT LINE UNITS AND TOWNHOUSES, THE LOCATION OF THE UTILITY CORRIDOR TO BE TO THE SATISFACTION OF THE CITY.





# LIUNA!

## LOCAL 183

1263 Wilson Ave. Suite 200, Toronto ON M3M 3G3  
T: 416.241.1183 | F: 416.241.9845 | Toll Free: 1.877.834.1183

**Jack Oliveira**  
*Business Manager*

**Luis Camara**  
*Secretary Treasurer*

**Nelson Melo**  
*President*

**Bernardino Ferrelra**  
*Vice President*

**Marcello Di Giovanni**  
*Recording Secretary*

**Jaime Cortez**  
*E-Board Member*

**Pat Sheridan**  
*E-Board Member*

**Eastern Office**  
P.O. Box 156 560 Dodge St.  
Cobourg ON K9A 4K5  
T: 905.372.1183  
F: 905.372.7488  
1.866.261.1183

**Northern Office**  
64 Saunders Road  
Barrie ON L4N 9A8  
T: 705.735.9890  
F: 705.735.3479  
1.888.378.1183

**Kingston Office**  
145 Dalton Avenue, Unit 1  
Kingston ON K7K 6C2  
T: 613.542.5950  
F: 613.542.2781

[www.liunalocal183.ca](http://www.liunalocal183.ca)



November 3<sup>rd</sup>, 2015

Mr. Robert Celsi  
Executive Director  
Ontario Concrete and Drain Contractors Association  
400 Creditstone Road, Unit 6  
Vaughan, ON L4K, 3Z3

Dear Mr. Celsi,

On behalf of the Executive Board of LIUNA Local 183, I writing in support of OCDCA's continued and sustained efforts to extend sewer laterals beyond the property line. Our members' continue to be placed at greater risk of injury and death when the sewer connections are made at the lot line because of the location of utilities such as gas, hydro and communication lines. In addition, because the soil has been excavated and backfilled several times, it is dangerously unstable posing even a greater risk to our members.

We fully agree that with the recommendation that laterals be extended 1.5 metres past the property line so that our workers would be operating in stable, undisturbed soil at a safe distance from gas, hydro and other utilities. In addition, as development becomes increasingly more dense, there continues to be less "room to move" on a construction site. Several municipalities have already adopted this practice and with its adoption, we have seen less concerns raised regarding this area of work.

Operationally, the extension of laterals past the lot line is not only more efficient, but safer as well. From our perspective, ensuring that our members return home safe after a day of work remains our number one priority. Recommendations such as those being advocated by the OCDCA support this priority, and we look forward to supporting the Association in making this a requirement for all municipalities in the Province of Ontario.

Yours Sincerely

Jason Ottey  
Director of Government Relations  
LIUNA Local 183

*Feel the Power*





International Union Of Operating Engineers

Local 793

2245 SPEERS ROAD OAKVILLE ONTARIO L6L 6X8 T 905.469.9299 F 905.469.3007

Mike Gallagher  
BUSINESS MANAGER

Joe Redshaw  
PRESIDENT

April 25, 1017

**Mr. Robert Celsi**  
**Executive Director**  
**Ontario Concrete and Drain Contractors Association**  
**400 Creditstone Road, Unit 6**  
**Concord, ON L4K 3Z3**

Dear Mr. Celsi,

The International Union of Operating Engineers Local 793 represents approximately 16,000 members who operate heavy equipment in the construction industry across the province of Ontario.

We would like to extend our full support to you in your effort to ensure that all municipalities extend new sewer and storm laterals 1.5 metres beyond the property line.

The continued effort by the OCDCA in relation to this matter has brought positive results to health and safety and to the reduction of damages to existing infrastructure.

We share your view that this practice needs to be implemented across the province to ensure the safety of the people performing this work. Extending the laterals an additional 1.5 metres past the property line allows our operators to excavate the trenches while adhering to proper sloping requirements. This greatly reduces the possibility of trenches caving in and workers being injured or killed on the job.

Additionally, this practice has led to a decrease in excavating equipment making contact with and damaging existing underground infrastructure as the excavation is being performed at a safe distance.

As encouraging as the results have been, we would like to see all jurisdictions across the province of Ontario adopt this building code adaptation. This implementation would ensure a consistent improvement to the health and safety of our workers and protect our existing underground infrastructure.

Yours truly,

Joe Redshaw  
President & Director of Social Services





Ministry  
of  
Labour

Ministère  
du  
Travail



Construction Health and Safety Program  
505 University Ave., 19<sup>th</sup> Floor  
Toronto, Ontario, M7A 1T7  
Tel: 416-326-7776, Fax: 416-326-7242

October 24, 2008

Mr. Frank D'Abbondanza and Mr. Jason Ottey  
Chaire and Co-Chair  
Low Rise Residential Sector Labour Management  
Health and Safety Committee  
C/o Construction Safety Association of Ontario  
21 Voyager Court South  
Etobicoke, ON, M9W 5M7

Dear Mr. D'Abbondanza and Mr. Ottey

**Re: Best Practice – Extension of Sewer Laterals & Watermain Service Connections**

Thank you for providing the ministry a copy of the Best Practice – Extension of Sewer Laterals & Watermain Service Connections presentation from Mr. Robert Celsi, Executive Director of the Ontario Concrete & Drain Contractors Association.

I fully support your initiative of the practice of Extension of Sewer Laterals & Watermain Service Connections and your efforts in assisting the members of the Concrete & Drain Contractors Sector. The additional clearance area identified in the Best Practice document will allow the employer the ability to provide an enhanced safety zone for workers.

The Ministry accepts this document as a best practice approved by the Labour Management Health and Safety Committee for the Low Rise Residential Sector. However, the content of this document does not supersede the requirements of the Occupational Health and Safety Act (the Act) and the Regulations for Construction Projects. Where there is a conflict between the content of this document and the Act and Regulations, the requirements of the Act and Regulations prevails.

Ministry Inspectors carry out workplace inspections to assess compliance with relevant provisions of the Occupational Health and Safety Act and its Regulations for workplace health and safety hazards that may be present at a workplace and to ensure that the Internal Responsibility System (IRS) is working.

I wish you every success in the implementation of the Best Practice – Extension of Sewer Laterals & Watermain Service Connections and in promoting health and safety. Should you have other questions or concerns regarding the ministry's enforcement or policies please feel free to call me at (416)326-7776.

Sincerely,



Michael Chappell  
Provincial Coordinator, CHSP  
Occupational Health and Safety Branch  
505 University Ave., 19<sup>th</sup> Floor  
Toronto, Ontario  
416-326-7776





**TECHNICAL STANDARDS &  
SAFETY AUTHORITY**

14th Floor, Centre Tower  
3300 Bloor Street West  
Toronto, Ontario  
Canada M8X 2X4  
Website: [www.tssa.org](http://www.tssa.org)

Mr Robert Celsi, Executive Director  
Ontario Concret & Drain Contractors Association  
400 Creditstone Road, Unit 6  
Concord, Ont.  
L4K 3Z3

Date: November 4, 2008

Sent by: Mail

Dear Mr Celsi:

The Technical Standards and Safety Authority (TSSA) is an Administrative Authority empowered under the Safety and Consumer Statutes Administration Act, 1996 to administer and enforce the Technical Standards and Safety Act, 2000 (the "Act") and its regulations. The Fuels Safety Program of the TSSA regulates the storage, transmission and utilization of hydrocarbon fuels and includes the installation and maintenance of associated equipment. The Act and appropriate Regulations can be found on our web site at [www.tssa.org](http://www.tssa.org).

As part of our role, TSSA investigates over 1,000 incidents involving pipeline damages every year. Each of these damages has the potential to create significant safety concerns for both workers and the public. The causal factors for most of these damages is more complex than what appears on the surface, and the Ontario Regional Common Ground Alliance (ORCGA) Best Practice 1-16 is an excellent example of this. The excavation activities associated with extending the sanitary and storm services can be made much less risky if the Best Practice is applied.

TSSA strongly supports any efforts to mitigate safety hazards, and we support OCDCA's initiative to work with Municipalities to move towards this Best Practices. These practices are developed in conjunction with industry. As such they represent a base level of due diligence which all industry stakeholders should ensure meet their own procedures, or that an equivalent safety net is in place.

Sincerely,

A handwritten signature in black ink, appearing to read 'M. Scarland', written in a cursive style.

Mike Scarland, BSc, CET, CFEL, CFII  
Operations Manager, Fuels Safety Program  
Technical Standards and Safety Authority  
Tel. (416) 734-3350  
Fax. (416) 231-7525  
E-mail [mscarland@tssa.org](mailto:mscarland@tssa.org)





Mr. Robert A. Celsi, Executive Director,  
Ontario Concrete & Drain Contractors Association  
400 Creditstone Road, Unit 6,  
Concord, Ontario  
L4K 3Z3

June 13, 2017

Dear Mr. Celsi:

**Re: Extension of Sewer & Storm Laterals in New Subdivisions**

The Ontario Regional Common Ground Alliance (ORCGA) promotes efficient and effective damage prevention for Ontario's vital underground infrastructure. The ORCGA unites all the industry stakeholders through our over 500 members working towards a common goal of safe digging practices. Ensuring that all excavators obtain locates and practice safe digging methods will provide a safer community.

I'm writing this letter to offer the ORCGA's support of your continued initiative on the issue of extending sewer and storm laterals an additional 1.5 meters beyond the property line of new residential construction. The continued vigilance of the OCDCA on this matter has had a positive impact on the Health & Safety and the reduction of damages to buried infrastructure.

Our industry Best Practices (introduced in 2004), have become the accepted benchmark for all stakeholders to follow. Best Practice 1-16 (below) is a true testament to the importance of extending sewer and storm water laterals 1.5 meters beyond the property line, and the impact on reducing infrastructure damages.

**1-16: Sewer/Water Main Service Connections**

**Practice Statement:** Sewer laterals and water main service connections should be installed and locatable from the main to 1.5m beyond the property line in new subdivisions.

**Practice Description:** For the purpose of health & safety, damage prevention and construction efficiency, sewer laterals and water service connections installed in new subdivisions should be extended from the main to 1.5m beyond the property line and plugged with a water tight plug. This allows workers installing the connections from the stubs to the homes to establish a safe stable work environment and minimizes impact to the existing facility infrastructure

The ORCGA continues to strive for the enhancement of public safety with all our stakeholders, and this initiative truly demonstrates and supports this. If you have any questions or require any further clarification on our industry Best Practices, please don't hesitate to call me at (647) 221-2572.

Sincerely,

A handwritten signature in black ink, appearing to read 'Douglas F. Lapp', is centered on a light gray rectangular background.

Douglas F. Lapp, P. Eng.  
President & CEO  
Ontario Regional Common Ground Alliance  
(O)905-532-9836  
(M)647-221-2572  
[douglas@orcga.com](mailto:douglas@orcga.com)





April 11, 2017

Mr. Robert Celsi  
Executive Director  
Ontario Concrete and Drain Contractors Association  
400 Creditstone Road, Unit 6  
Concord, ON L4K 3Z3

**Re: Extension of Sewer and Storm Laterals**

Mr. Celsi,

The Ontario Sewer and Watermain Construction Association (OSWCA) represents over 750 companies across Ontario including contractors, manufacturers, distributors and consulting engineers. We have represented the sewer and watermain construction industry in Ontario since 1971. Collectively, we perform over \$1 billion a year in capital projects to ensure clean safe drinking water and environmentally responsible wastewater treatment and disposal. The OSWCA is a champion of environmental protection and best practices in safety and water system management.


The continued efforts by the OCDCA on the issue of extending sewer and storm laterals an additional 1.5 meters beyond the property line of new residential construction should be immediately adopted by all municipalities as the industry minimum for both Health and Safety reasons and for the reduction of damages to infrastructure.

This Building Code Adaptation needs to be standardized across the province to ensure the safe working conditions of those excavating and tying into the existing sewer and storm mains. The additional 1.5 meters' extension of the laterals has allowed for proper excavations and sloping requirements to be met and therefore an increase to the overall health and safety of workers.

Furthermore, this adaptation has led to the decrease of underground infrastructure strikes due to extension of the excavation area away from existing underground facilities. Placing the tie-in 1.5 meters past the property line has allowed for unencumbered excavations therein avoiding the possibility of infrastructure strikes

Across Ontario most municipalities see the advantage of adopting this Building Code Adaptation as standard practice. All jurisdictions now need to incorporate this advancement as the standard to obtain true consistency for the health and safety of our workers and the overall protection of existing underground infrastructure

Yours truly,



Harry Bauman  
OSWCA President



March 30, 2017

Mr. Robert Celsi  
Executive Director  
Ontario Concrete and Drain Contractors Association  
400 Creditstone Road, Unit 6  
Concord, ON L4K 3Z3

**Re: Extension of Sewer and Storm Laterals**

Mr. Celsi,

The Greater Toronto Sewer and Watermain Contractors Association (GTSWCA) represents 170 members in the water, wastewater and storm sector. Our member companies have been installing these vital core infrastructures for 60 years for all the municipalities and regions throughout the Greater Toronto region.

We write you today in full support of your continued initiative on the issue of extending sewer and storm laterals an additional 1.5 meters beyond the property line of new residential construction.

The persistence by the OCDCA on this matter has had a positive impact on the construction industry in two important aspects: Health and Safety and the reduction of damages to infrastructure.

Working conditions have been greatly improved due to this small but significant change to the building code requirements. The extension of the laterals has allowed for proper excavations and sloping requirements to be met and therefore an increase to the overall health and safety of workers. Additionally, your associations foresight has led to the decrease of underground infrastructure strikes due to excavation proximity. Placing the tie-in 1.5 meters past the property line has allowed for unencumbered excavations therein avoiding the possibility of infrastructure strikes.

Although the outcome thus far has been favorable, this industry best practice needs to be applied through every municipality and region in Ontario. Only through widespread standardization will we get true consistency for the health and safety of our workers and the overall protection of existing underground infrastructure. The GTSWCA encourages all municipalities and Regions to adopt this Building Code Adaptation as standard practice.

Yours truly,

  
John Teahen  
GTSWCA President

5045 Orbitor Drive, Unit 12, Suite 300, Mississauga, Ontario L4W 4Y4 | T. 905 629-7766 | F. 905 629-0587 | [www.gtswca.org](http://www.gtswca.org)





*BUILDING A GREATER GTA*  
Building Industry and Land  
Development Association

April 30, 2009

Mr. Robert Celsi  
Executive Director  
Ontario Concrete and Drain Contractors' Association  
400 Creditstone Road, Unit 6  
Concord, On L4K 3Z3

Mr. Robert Celsi:

I am writing to support the efforts of the OCDCA to extend sewer lateral beyond the property line. This proposal is to extend the lateral 1.5 meters past the property line, enabling workers to operate in stable, undisturbed soil and at a safer distance from gas hydro and other utilities. This is a very practical solution to a serious potential safety hazard.

BILD understands the Ministry of Labour has accepted this document as a best practice, approved by the Provincial Labour Management Health and Safety Committee.

We also understand that the Technical Standards and Safety Authority (TSSA), Construction Safety Association of Ontario (CSAO), and the Ontario Regional Common Ground Alliance (ORCGA) have incorporated this practice into their internal best practices guidelines.

The Region of Durham, City of Burlington, Town of Oakville is amongst a number of municipalities that have adopted this practice, and we support the OCDCA efforts to convince additional municipalities to adopt this practice.

Sincerely,

Joe Vaccaro  
VP, Policy and Government Relations

C: Leith Moore, Chair – BILD  
Bernie Torchia, Chair, Builders' Council – BILD  
Fraser Nelson, Chair, Urban Land Council and York Region Chapter – BILD  
Stephen Dupuis, President and President, BILD  
Paula Tenuta, Director, Municipal Government Relations – BILD  
Danielle Chin, Planning and Policy Analyst – BILD



**Ontario**  
Home Builders'  
Association

---

20 Upjohn Rd., Suite 101 (416) 443-1545  
North York, Ontario Toll Free 1-800-387-0109  
M3B 2V9 Fax: (416) 443-9982  
[www.ohba.ca](http://www.ohba.ca) [info@ohba.ca](mailto:info@ohba.ca)

June 1, 2017

Mr. Robert Celsi  
Executive Director  
Ontario Concrete and Drain Contractors Association  
400 Creditstone Road, Unit 6  
Concord, ON L4K 3Z3

Dear Mr. Celsi,

OHBA supports the recommendation by the Ontario Concrete and Drain Contractors Association that all municipalities in Ontario adopt the practice of extending new sewer and storm laterals 1.5 metres beyond the property line in new residential construction subdivisions. This change will enable workers to operate in stable, undisturbed soil and at a safer distance from utilities. We agree that this practice will enhance health and safety of workers and the public in residential subdivisions under construction. OHBA also understands that there are a number of utilities that also have regulations and oversight in this area which might have site-specific expertise.

OHBA represents over 4,000 member companies, organized through a network of 30 local associations across the province. Our membership is made up of all disciplines involved in land development and residential construction, including: builders, developers, professional renovators, trade contractors, manufacturers, consultants and suppliers. Our members have built over 700,000 homes in the last ten years in over 500 Ontario communities.

Sincerely,

Joe Vaccaro  
Chief Executive Officer  
Ontario Home Builders' Association





May 1, 2017

Mr. Robert Celsi  
Executive Director  
Ontario Concrete and Drain  
Contractors Association  
400 Creditstone Road, Unit 6  
Vaughan, Ontario  
L4K 3Z3

**RE: Extension of Sewer and Storm Laterals**

Dear Mr. Celsi,

I am writing to advise that RESCON supports OCDCA's continued efforts to extend sewer laterals beyond the property line. While OCDCA has been successful with some municipalities including Durham region, not all municipalities have adopted the best practice of extending sewer and storm laterals an additional 1.5 metres beyond the property line of new residential construction.

OCDCA's proposal carefully takes into account practical on the ground realities and enshrines a high level of workplace health and safety practices. Specifically, the recommended course of action reduces both the number and likelihood of strikes, and allows workers to operate in stable, undisturbed soil at a safer distance from gas, hydro and other utilities.

Municipalities who have already adopted this approach are demonstrating their commitment to operational efficiency and the health and safety of both workers and the community at large.

For further information, please do not hesitate to contact RESCON.

Yours Truly,

Richard Lyall  
President  
RESCON

25 NORTH RIVERMEDE ROAD, UNIT 13
VAUGHAN, ONTARIO L4K 5V4
TEL: 905-760-7777
FAX: 905-760-7718
WWW.RESCON.COM



*Ontario Plumbing Inspectors Association Inc.*  
Plumbing Professionals working for a safer Ontario since 1920

---

Mike Melki, 101 Centrepointe Drive, Ottawa, ON, K2G 5K7

July 14, 2017

Mr. Robert Celsi  
Executive Director  
Ontario Concrete and Drain Contractors  
400 Creditstone Rd, Unit 6  
Concord, ON, L4K 3Z3

Dear Mr. Celsi,

**Re: Best Practice – Extension of Sewer Laterals & Watermain Service Connections**

The Executive of the Ontario Plumbing Inspectors Association (OPIA) have discussed the ongoing concerns of OCDCA regarding the extension of sewer laterals & watermain service connections to 1.5m inside the property line.

I am happy to advise you we fully support the OCDCA in your efforts to have municipalities who have not already adopted this best practice to consider adopting it as it relates to the health and safety of workers and protection of other utilities which are often present at the property line.

Sincerely,

Mike Melki, CBCO  
Secretary, OPIA



May 4, 2017

Mr. Robert Celsi – Executive Director  
Ontario Concrete and Drain Contractors Association  
400 Creditstone, Unit#6  
Concord, Ontario  
L4K 3Z3

Dear Mr. Celsi,

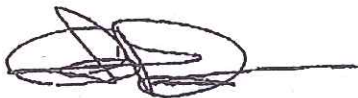
The Provincial Labour-Management Health and Safety Committee's (PLMHSC) of the Infrastructure Health and Safety Association (IHSA) are designated as the Section 21 Advisory Committee to the Ministry of Labour (MOL) and meets monthly to engage the expertise of various industry sectors in assisting the MOL with enforcement initiatives, regulatory reform and increasing health and safety awareness.

The PLMHSC fully supports your efforts to have sewer laterals in new residential construction developments extended by an additional 1.5 meters in the interest of worker health and safety and utility damage prevention. In our view, this change to the Building Code should be adopted by all municipalities in Ontario in an effort to achieve a consistent standard across the province.

Locating the connecting point 1.5 meters into the property line significantly reduces the opportunities for hazards relative to utility contacts and unsafe excavations. The capped lateral extensions will be at least 1.5m away from the intersection point with the underground utilities, allowing them to remain undisturbed during excavation, and allowing the banks of the excavation to be cut with sloped sides. Clearly these are practices which will enhance worker safety in such circumstances.

Although most municipalities (all of Halton, all of Peel, all of Durham, 5 out of 9 in York Region, several in Simcoe County & in South Central Ontario) have already adopted the practice of sewer lateral extensions and it is provided in their primary Standard Drawings, it is imperative that all Ontario municipalities embrace this approach going forward, particularly in the interest of worker health and safety.

Sincerely,



Glen Drewes, Co-Chairperson  
Provincial Labour-Management  
Health and Safety Committee



Jim LaFontaine, Co-Chairperson  
Provincial Labour-Management  
Health and Safety Committee

GD/JLF/dd



**Work Safe for Life**

May 1, 2017

Mr. Robert Celsi  
Executive Director  
Ontario Concrete and Drain Contractors Association  
400 Creditstone Road, Unit 16  
Concord, On L4K 3Z3

**RE: Extension of Sewer and Storm Laterals**

Dear Mr. Celsi,

Infrastructure Health and Safety Association (IHSA), as a designated safe workplace association under the Occupational Health and Safety Act, is funded by the Ministry of Labour to provide health and safety training, consulting and resources for the construction, utility and transportation sectors. IHSA fully supports OCDCA's initiative in advocating for the consistent application across the province of the extension of sewer and storm laterals by 1.5 metres beyond property line as required in the 2012 Build code update.

The extension of the sewer and storm laterals by 1.5 metres beyond property line increases worker safety first and foremost by facilitating proper excavation techniques and decreasing the chance of striking or damaging local buried utilities. Further, this practice helps to prevent damage to the existing utilities typically located at or near the property line. As a result, IHSA strongly urges all municipalities to adopt the 2012 Building Code amendments immediately.

The OCDCA's best practice of extending sewer and storm laterals by 1.5 meters has been in place for over a decade. With the best practice now embedded in the 2012 Building Code, IHSA supports the immediate transition to this practice across all Municipalities to assist in improved health and safety outcomes for all workers. Our collective goal is ensuring all workers return home safely after work each and every day.

Sincerely,

A handwritten signature in black ink, appearing to read "EG", is positioned above the typed name of Enzo Garritano.

Enzo Garritano  
President and CEO  
Infrastructure Health and Safety Association





**ONTARIO BUILDING OFFICIALS ASSOCIATION**

# Journal

Issue 104 / December 2014

## CASE COMMENT

Is Your Change in Building Permit Fees Illegal?  
Stephen Lockwood and Lynn Donnelly Pg 32

Health & Safety  
for Building Inspectors:  
Hazards to Consider  
page 41

## SITE PLAN APPROVAL

### & APPLICABLE LAW:

CHALLENGING DECISIONS BEFORE THE  
ONTARIO MUNICIPAL BOARD RATHER  
THAN THE COURTS  
John Mascarin page 6

**AIRD & BERLIS LLP**

Barristers and Solicitors

## Featured Articles

President's Message  
Home Selling - pg 3

Legal Corner  
John Mascarin - pg 6

Emergency Management  
Heather Rutherford - pg 12

CSA F280  
- pg 16

2014 AMTS  
- pg 18

ULC  
- pg 37





### **Best Practice – Extension of Sewer Laterals**

The purpose of this article is to achieve uniformity throughout Ontario regarding the extension of sewer laterals 1.5 meters beyond the property line in new subdivisions.

The 2012 Ontario Building Code, which came into effect January 1, 2014, now recognizes sewer lateral extensions.

#### **Division A - 1.4.1.2. Defined Terms**

Sewer lateral extension means an extension of a public sewer that connects to a storm building sewer or sanitary building sewer 1.5 m beyond the property line and that serves not more than one property.

#### **Division B - 7.3.6.1. Tests and Inspection of Drainage or Venting Systems**

(6) A sewer lateral extension need not be tested and inspected if the sewer lateral extension was constructed, tested and inspected at the time of the installation of the public sewer.

The main purpose of extending the laterals is safety. The unstable ground at the lot line is subject to cave-ins, placing anyone working in the trench in danger. Although not as high a priority as the aforementioned threat to life, it is also advantageous to extend the sewer laterals to prevent costly damage to other services also located right at the property line (gas, hydro, cable etc.). Furthermore, it can give the inspectors a level of comfort knowing they are not asking someone to go into a possible unsafe trench condition to perform the required tests.

The sewer lateral extensions are to be extended 1.5 meters onto the private property by the sewer and watermain contractor and are to be inspected and tested at this time in conjunction with the public sewer. As per Sentence 7.3.6.1. (6), there is no need for a municipality to issue permits or conduct tests for the sewer lateral extensions.

Currently, several municipalities have adopted the "Best Practice – Extension of Sewer Laterals". Hopefully, all Ontario municipalities will adopt this common sense approach to safety and damage control by implementing the necessary legislation by means of subdivision agreements and amending their engineering standard for residential sewer connections to reflect these recent code additions.

To achieve uniformity in Ontario municipalities, and to prevent possible cross connections between the storm and sanitary sewers, OPIA recommends as part of the "Best Practice" program, that white pipe be installed for **storm** and any other colour for sanitary. Most municipalities are currently using this colour code system.

The OPIA and the Ontario Concrete and Drain Contractors Association strongly support the 1.5 meter "Best Practice" extensions of sewer laterals. Safety first!





# Ontario Plumbing Inspectors Association

*February 2018*

**THE 2018 ANNUAL MEETING AND EDUCATION SEMINAR**

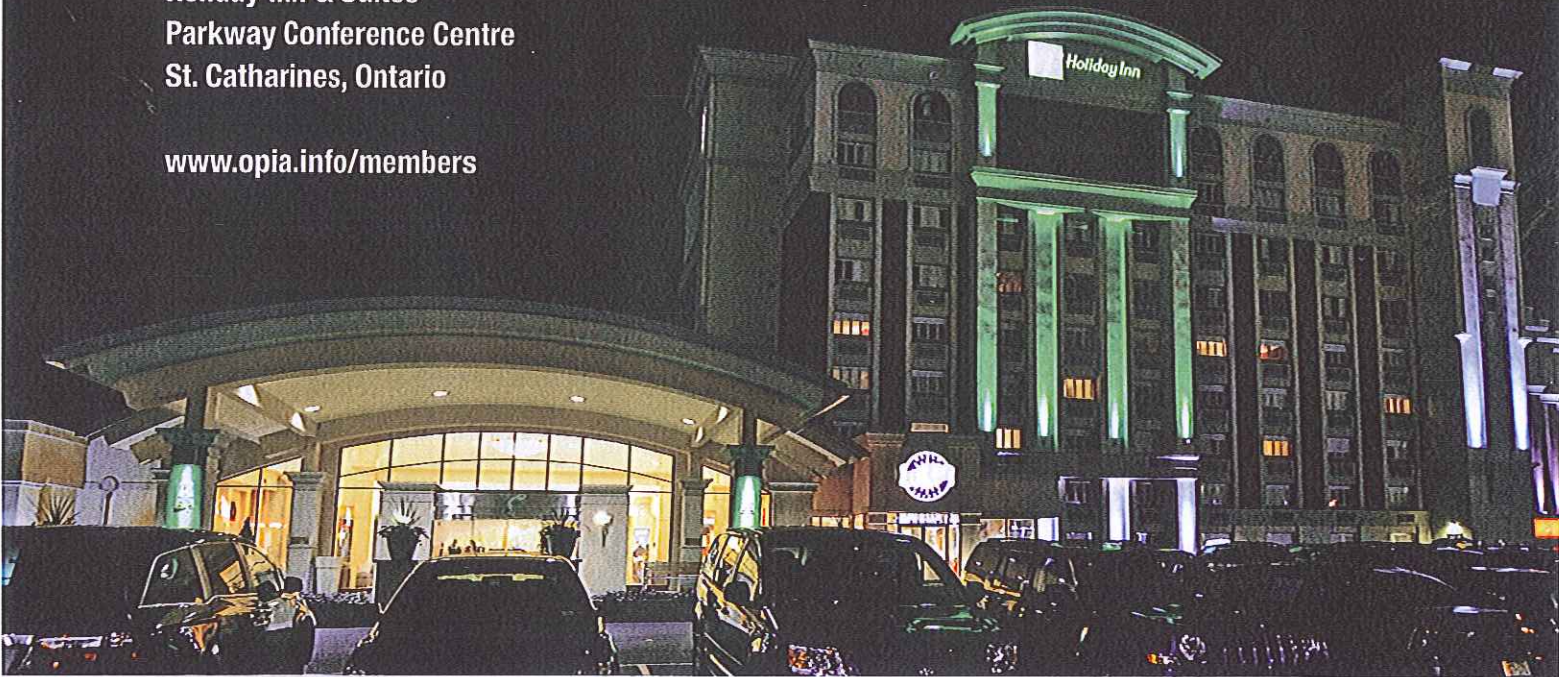
**JUNE 10 to JUNE 12 , 2018**

**Holiday Inn & Suites**

**Parkway Conference Centre**

**St. Catharines, Ontario**

[www.opia.info/members](http://www.opia.info/members)



**Included in this issue ...**

- **AMES 2018**
- **President's Message**
- **Executive Update**
- **Backflow Prevention Program**
- **Code Tech**
- **Ministry Update**
- **Safety Best Practices**

**Robert Celsi**

**Ont. Concrete & Drain Cont. Assoc.**

**400 Creditstone Road, Unit #6**

**Concord, ON L4K 3Z3**



## Summary - Safety Best Practice: 1.5m Extension of Sewer Laterals

The Ontario Concrete & Drain Contractors Association would like to achieve uniformity throughout Ontario regarding the Extension of Sewer Laterals 1.5m beyond the property line in new subdivisions, by means of Municipal Standard Drawings.

The 2012 Ontario Building Code (OBC) defines a sewer lateral extension as follows:

### Division A - 1.4.1.2. Defined Terms

Sewer lateral extension means the portion of a storm building sewer or sanitary building sewer that extends from the public sewer up to 1.5m into the property.

The OBC also states the following:

### Division B - 7.3.6.1. Tests and Inspection of Drainage or Venting Systems

(6) A sewer lateral extension need not be tested and inspected if the sewer lateral extension was constructed, tested and inspected at the time of the installation of the public sewer.

The main purpose of extending the laterals 1.5m into the property is **Worker Safety**. The unstable and previously disturbed ground at the lot line is subject to cave-ins, placing anyone working in the trench in danger. Although not as high a priority as the aforementioned threat to life, it is also advantageous to extend the sewer laterals to prevent costly **Infrastructure Damage** to other services located right at the property line (gas, hydro, cable, etc.). Furthermore, it can give **Inspectors** a level of comfort knowing they are not asking someone to go into a possible unsafe trench condition to perform the required tests.

By definition, the sewer lateral extension may extend up to 1.5m into the property by the Sewer and Watermain contractor and are to be inspected and tested at that time in conjunction with the public sewer. As per sentence 7.3.6.1.(6), there is no need for a municipality to issue permits or conduct tests for the sewer lateral extensions during construction on the property.

Currently, many municipalities have adopted the "Best Practice - 1.5m Extension of Sewer Laterals". Hopefully all Ontario Municipalities will adopt this common sense approach to **Safety** and **Infrastructure Damage Prevention** by implementing the necessary amendments to their **Engineering Standard DWGs** for residential Storm & Sanitary sewer connections.

Please contact the OCDCA for the **Industry Wide** support package, and view our 6 minute video at the following link direct: <http://ocdca.ca/extsewerlats.html> , or through our website at [www.ocdca.ca](http://www.ocdca.ca) under Industry Best Practices. Thank you for your Commitment To Progress & Safety!

### 1.5m Extension of Laterals Safety Best Practice: Regional Update

#### GTA

##### Halton

All Municipalities within the Region provide the Extension in their primary Standard DWGs.

##### Peel

All Municipalities within the Region provide the Extension in their primary Standard DWGs.



### Durham

All Municipalities within the Region provide the Extension in their primary Standard DWGs.

### York Region

In Vaughan, King, Newmarket, Aurora and East Gwillimbury; sewer lateral extensions are a requirement for new subdivisions, 5 of 9 municipalities have revised their Standard Drawings, Richmond Hill is in the process of strongly considering adopting the Safety practice, and revising their DWGs for new sub-divisions.

Currently, in Richmond Hill, Markham, Whitchurch-Stouffville and Georgina, the extension of sewer laterals is permitted and recommended but the developer/owner has the option to stop at the lot line if it is not practical to extend the laterals as for instance, with townhouse projects.

Although the extension of sewer laterals is not formally required in these 4 municipalities, the inspectors in these municipalities informed us that it is common practice to extend them, which is encouraging, yet it is time the Region Standardizes the Best Practice!

### Simcoe County

In Barrie and Wasaga Beach sewer laterals extensions are a requirement for new subdivisions.

Essa, Collingwood, Bradford West Gwillimbury, Springwater, Orillia and New Tecumseth: These municipalities are all in the process of updating their standards and their standard drawings. They currently permit and recommend sewer lateral extensions.

Innisfil is being focused on, since plenty of construction is currently taking place in the area, and we are hoping for their cooperation in upcoming meetings.

### South Central Ontario

In Guelph Eramosa sewer laterals extensions are a requirement for new subdivisions.

The City of Guelph has recently agreed to make the extension of sewer laterals a requirement. They will be amending their standards and their standard drawings soon.

Cambridge, Kitchener, Brantford and North Dumfries have yet to revise their Standard DWGs .

The "Best Practice" has been well received by most municipalities that have been approached in this region, and now that the City of Guelph has come in line requiring lateral extensions, we believe the other municipalities in the area will come on board and revise their Standard Drawings.

*The OCDCA encourages all Municipalities to be committed to progress and the Standardization of our Safety Best Practice!*

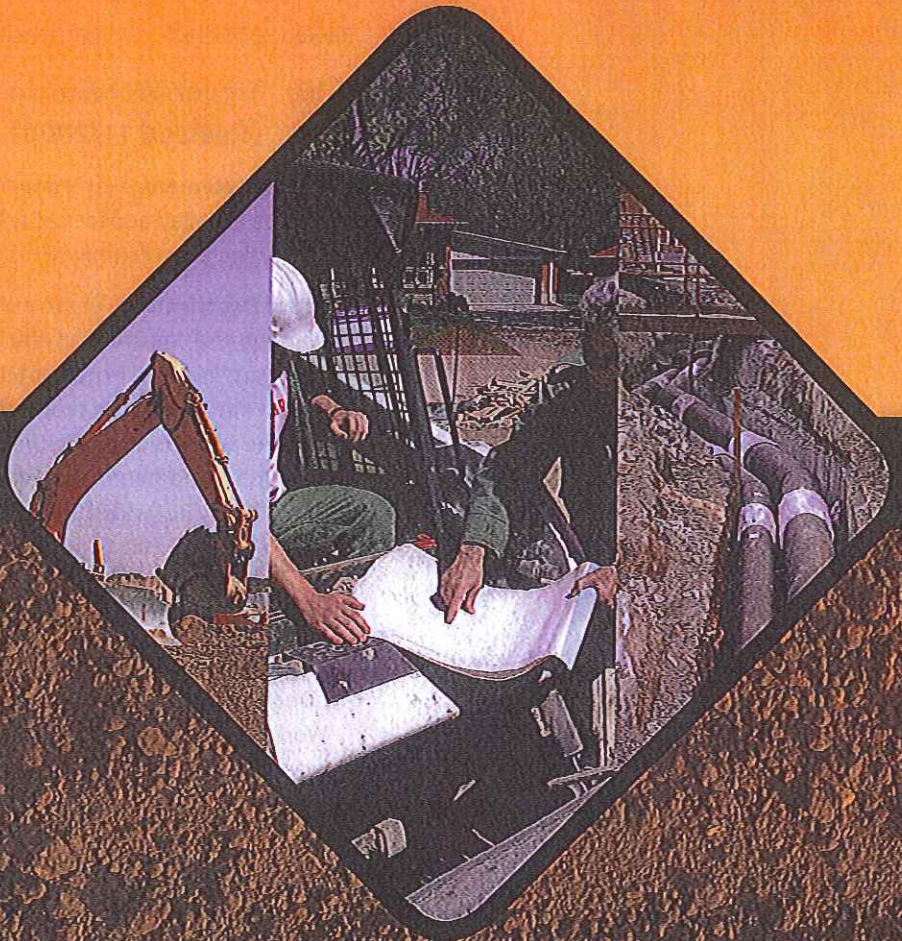
Please follow the link below to view the latest support package.

<https://drive.google.com/file/d/1nfeWDi2Im-HRNJxGtVZWfoZHutlOIa-7/view?usp=sharing>





Ontario Regional  
**ORCGA**  
Common Ground Alliance



**UNDERGROUND INFRASTRUCTURE  
DAMAGE PREVENTION**

Best Practices  
Version 7.0  
Published Apr. 2012



structural details of manholes/chambers and any other information as deemed necessary that may affect future maintenance of the utility. All drawings should note these changes "As Recorded" with date on the drawings in a prominent location.

**Benefits:** Accurate as-built/as-constructed drawings serve as an integral initial information source for future projects, and minimize the risk of damage to existing underground facilities.

**References:**

Region of Durham – Design Specifications for Regional Services

**1-16: Sewer/Watermain Service Connections  
(Revised 11/2008)**

**Practice Statement:** Sewer laterals and watermain service connections should be installed and locatable from the main to 1.5m beyond the property line in new subdivisions.

**Practice Description:** For the purpose of health & safety, damage prevention and construction efficiency, sewer laterals and water service connections installed in new subdivisions should be extended from the main to 1.5m beyond the property line and plugged with a water tight plug. This allows workers installing the connections from the stubs to the homes to establish a safe stable work environment and minimizes impact to the existing facility infrastructure.

**References:**

- Region of Durham S-301 rev 2005 & Region of Durham s-410 rev 2005
- Extension of the Laterals Best Practice prepared by: Robert Celsi, Executive Director, OCDCA, Ray DiDonato P. Eng, VP, OCDCA, Frank Tucci, Chair Worksafe Committee, OCDCA, Daniel Fiorini, CET, CSAO Low Rise Labour management Health & safety Committee
- ORCGA Planning & Design Committee (Feb, 2006)

**1-17: Sharing of Sewer Main and Lateral Information  
(New 01/2009)**

**Practice Statement:** Project and facility owners should use all reasonable and available means to share sewer main and lateral information including, but not limited to, location.

**Practice Description:** In the planning phase of a project, the designer should request all sewer main and lateral information including Foundation Drain Collectors (FDC's) pertaining to that project area from the Municipality / Developer. The Municipality / Developer should provide the sewer main and lateral information if available.



April 15, 2009

Ontario Concrete & Drain Contractors Association  
400 Creditstone Road  
Concord, On  
L4K 3Z3

Attention: Mr. Robert Celsi  
Executive Director

Further to our conversation TACC Construction has extended the Sanitary and Storm service laterals 1.5m beyond property line on several of our projects in both Mississauga and Brampton on our "TACCPAR, PARTACC" Developments for the very reason your association (OCDCA) is promoting.

Our building division Arista Homes and Partners at Paradise Homes have requested this method on all existing and future developments as a best practice installation.

By extending the service connection 1.5m past the property line it not only insures that their Drain contractors are a safe distance from the utilities in the boulevards it also prevents them from over excavating and undermining where the future sidewalk may be located, thereby reducing or illuminating future settlement in the sidewalk since no compactive effort is used in their backfill operation.

TACC Construction typically allows about \$175.00 for the extension of the laterals the 1.5m.

Our builder (s) recover at least that or more from their Drain and Concrete contractor for a shorter lateral to the basement and time saving and less aggravation by not having to waste time to locate the utilities that are within 1.0m of the property line.

Yours truly,  
TACC Construction Ltd.



Carlo DeGasperi





Ontario Concrete & Drain Contractors Association  
400 Creditstone Rd. unit # 6  
Concord, ON  
L4K 3Z3

Re: Extension of storm and sanitary sewers

Att. Mr. Robert Celsi

Dear Sir

Please be advised that the cost of extending sanitary and storm services connection beyond the property line by 1.50 meter will be \$ 150.00/unit including supply and place service pipes, bedding and fittings as per Region of Peel and City of Brampton specifications.

Should you require further information, please call the undersigned.

Regards,

A handwritten signature in black ink that reads "A. Wissa". The signature is written in a cursive, flowing style.

Albert Wissa P. Eng.  
Niran Construction

April 30, 2009

Ontario Concrete & Drain Contractors Association  
400 Creditstone Road  
Concord, Ontario L4K 3Z3

Attention: Mr. Robert Celsi, Executive Director

**Re:     *Extension of Storm and Sanitary Lateral  
          1.5 metres beyond the property line***

Further to our discussion with respect to extending the sanitary and storm services laterals an additional 1.5 metres into the property, we provide this writing.

Condeland Engineering has been involved with various projects across the G.T.A. including the City of Hamilton. The basic costs of the lateral connections have ranged between \$650-\$900 each. The average length for these connections is 9 & 10 metres long. Therefore, extending the services an additional 1.5 metres as part of the initial construction we believe is not onerous. Based on the costs that we have experienced the additional costs for extending the services range from \$75-\$125 each.

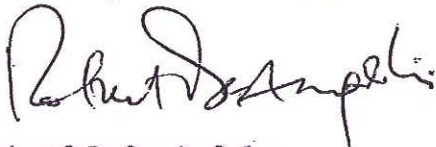
Furthermore, we concur with your Associations approach with extending these services for two reasons:

1. Safe excavation; and
2. Relief on potential undermining of utilities and sidewalk located within the boulevard.

Should you require further information, please contact the undersigned.

Yours very truly,

**CONDELAND ENGINEERING LIMITED  
PLANNERS, PROJECT MANAGERS AND CONSULTING ENGINEERS**



Robert P. De Angelis, P. Eng.

RPD:ca

(file: Gencont/Ext.Serv)





May 16, 2017

Robert Celsi  
Executive Director  
Ontario Concrete and Drain Contractors Association  
400 Creditstone Road, Unit 6  
Concord, Ontario  
L4K 3Z3

Re: Extension of Sewer Laterals

Dear Mr. Celsi;

Please accept this letter in support of the OCDCA's efforts to make it a requirement for all municipalities to have all sewer laterals to extend 1.5 metres beyond the property line in new residential subdivisions.

The adoption of this best practice by all municipal jurisdictions can help to ensure a safer environment for both workers and members of the public. By extending the sewer laterals, hazards to health and safety are greatly reduced, including:

- Potential contact with other underground utilities, such as natural gas, telephone, cable, and hydroelectric power
- Unsafe excavations due to restricted area for adequate sloping, causing potential for cave-ins to occur
- Unstable ground conditions due to multiple, repeated excavations and backfilling of the soil
- Worker exposure to moving heavy equipment, due to limited mobility in a restricted work area

Safety First Consulting believes that this proactive approach to health and safety will have a positive impact on all workers employed by the OCDCA contractors, by assisting in creating a safer work environment. As health and safety consultants, we are committed to all efforts which will ensure that each and every worker returns home safely at the end of each day.

Sincerely,  
  
Mary Strazzeri,  
President