



Welcome

On behalf of the Swiss Committee on Dams it is our pleasure to invite you to participate in the 13th International Benchmark Workshop on Numerical Analysis of Dams - at EPFL, Lausanne, in Switzerland, from 9th to the 11th September 2015. The Benchmark is jointly organized with the ICOLD - Committee on Computational Aspects of Analysis and Design of Dams. With over 150 large dams (of which 25 over 100 m high), Switzerland is a hub for Dam Engineering. The Swiss Federal Office of Energy (SFOE) requires that Owners verify their schemes including “dams” for seismic loading. By 2015, a vast majority of seismic verifications shall have been performed in accordance with the most recent Guidelines published by the SFOE thus representing a milestone in Swiss Dam Engineering. It would be a pleasure to meet you at EPFL in September 2015!

Your Local Organising Committee (LOC)

Anton J. Schleiss, Chair
 Russell M. Gunn
 Marc H. Balissat
 Pedro F. A. Manso
 Gesualdo Casciana, secretariat

Host and Contact

Laboratory of Hydraulic Constructions (LCH)
 Ecole Polytechnique Fédérale de Lausanne (EPFL)
 Station 18, CH-1015 Lausanne, Switzerland
 Conference email address: icold2015bmw@epfl.ch

The Benchmark concept

The Benchmark sets a framework for Engineers, Owners and Researchers to perform and share their experiences for predefined themes, as follows:

Before the workshop

- a. The organizers formulate “problems” for comparative analysis by participants and hand over basic data;
- b. Participants submit their reply to the problem;
- c. The organizers prepare a reference reply and a summary report of all contributions.

During the workshop

- d. Participants present their replies
- e. Organizers present reference reply & summary

After the workshop, a compilation of the contributions and the wrap-up report is published online.

Call for contributions

Participants interested in submitting a solution to the benchmark case should fill the form available on the workshop website and send it by **February 26, 2015** to the workshop secretariat through the website.

Preliminary program

Wednesday, 9th September 2015

Theme A – Concrete dam

Seismic safety evaluation of a concrete dam based on guidelines

Theme B – Fill dam

Probability of failure of an embankment dam due to slope instability and overtopping

Thursday, 10th September 2015

Theme C – Open

Safety evaluation of dams

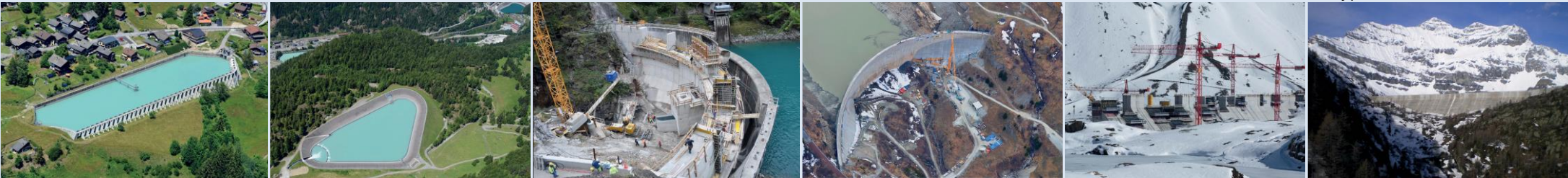
Friday, 11th September 2015

Excursion

Important Dates 2015

- Downloading benchmark data: **from January 19**
- Announce intent to contribute: **February 26**
- Reply to benchmark case with paper: **June 15**
- Early-bird registration: **June 15**

Source of photos: 2015 Calendar SwissCOD





ICOLD Committee on Computational Aspects of Analysis and Design of Dams

<http://www.icold-cigb.org>

Chairman

Escuder-Bueno, I. (Spain)

Vice-Chairman

Mazzà G. (Italy)

Technical Advisory Team

Restelli, F. (Argentina)

Zenz, G. (Austria)

Curtis, D. (Canada)

Chen, S. (China)

Marulanda, C. (Colombia)

Varpasuo, P. (Finland)

Tancev, L. (Macedonia)

Frossard, E. (France)

Carrere, A. (Hon. M, France)

Beetz, U. (Germany)

Dakoulas, P. (Greece)

Noorzad, A. (Iran)

Meghella, M. (Italy)

Fanelli, M. (Hon. M., Italy)

Uchita, Y. (Japan)

Andersen, R. (Norway)

Popovici, A. (Romania)

Glagovsky, V. (Russia)

Minarik, M. (Slovakia)

Hassanzadeh, M. (Sweden)

Gunn, R. M. (Switzerland)

Matheu, E. (United States)



Schweizerisches Talsperrenkomitee
Comité suisse des barrages
Comitato svizzero delle dighe
Swiss Committee on Dams

International Benchmark 2015

13th International Benchmark on the Numerical Analysis of Dams

Lausanne | Switzerland

9th - 11th September 2015

<http://icold2015bmw.epfl.ch/>

Travelling, Accommodation & Venue

The 13th Benchmark Workshop shall be held in Lausanne, the fifth-largest city in Switzerland, the Olympic Capital and a University Town. Situated by Lake Geneva and surrounded by vineyards, countryside and forests, Lausanne benefits from an enchanting backdrop with spectacular views of the Alps. It is easily accessible by train, car, boat and aeroplane, being situated near Geneva International Airport (40 minutes) and Zurich Airport (2 hours 30 minutes).

The École Polytechnique Fédérale of Lausanne (hosting institution) is located on the shores of the Lake Geneva and at the foot of the Alps and Mont-Blanc. Its main campus brings together over 11,000 persons, students, researchers and staff in the same magical place. With over 350 laboratories and research groups on campus, EPFL is ranked top 3 in Europe and top 20 worldwide in many scientific rankings.

About EPFL: www.epfl.ch

A various number of hotels, located in Lausanne, will be provided to the participants at special rates. *Lausanne Tourisme* will take the responsibility for the organisation and administration of hotel accommodation for the participants. A direct link will be made available on the workshop website. For more information, please contact *Lausanne Tourisme* : <http://www.lausanne-tourisme.ch/>

Source of photos: Lausanne Tourism

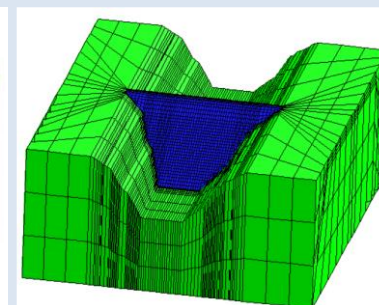
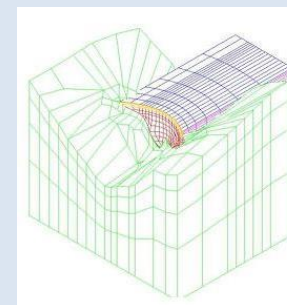


Registration fees

	Early Bird (before 15.06)	Regular
Registration	CHF 470	CHF 520
Student	CHF 200	CHF 230
Excursion	CHF 100 (limited seats available)	

Full registration includes lunches, coffee breaks, welcome reception and documentation. The excursion fee includes transportation by coach and lunch.

Call for Contributions



Hosted by
Laboratory of Hydraulic Constructions (LCH)

