

AMERICAN SOCIETY OF LANDSCAPE ARCHITECTS

SUSTAINABILITY AND  
RESILIENCE SINCE 1899

The American Society of Landscape Architects is the primary voice for the Landscape Architecture profession.

- Today, ASLA members lead the design, planning and analysis of our natural and built environments in communities across the nation (and around the world).
- We urge Congress to develop and support legislative policies to rebuilt America's infrastructure; protect our natural, cultural and historic resources; and expose millions of visitors to our iconic national parks.

LANDSCAPE ARCHITECTURE

# MORE THAN GARDENS









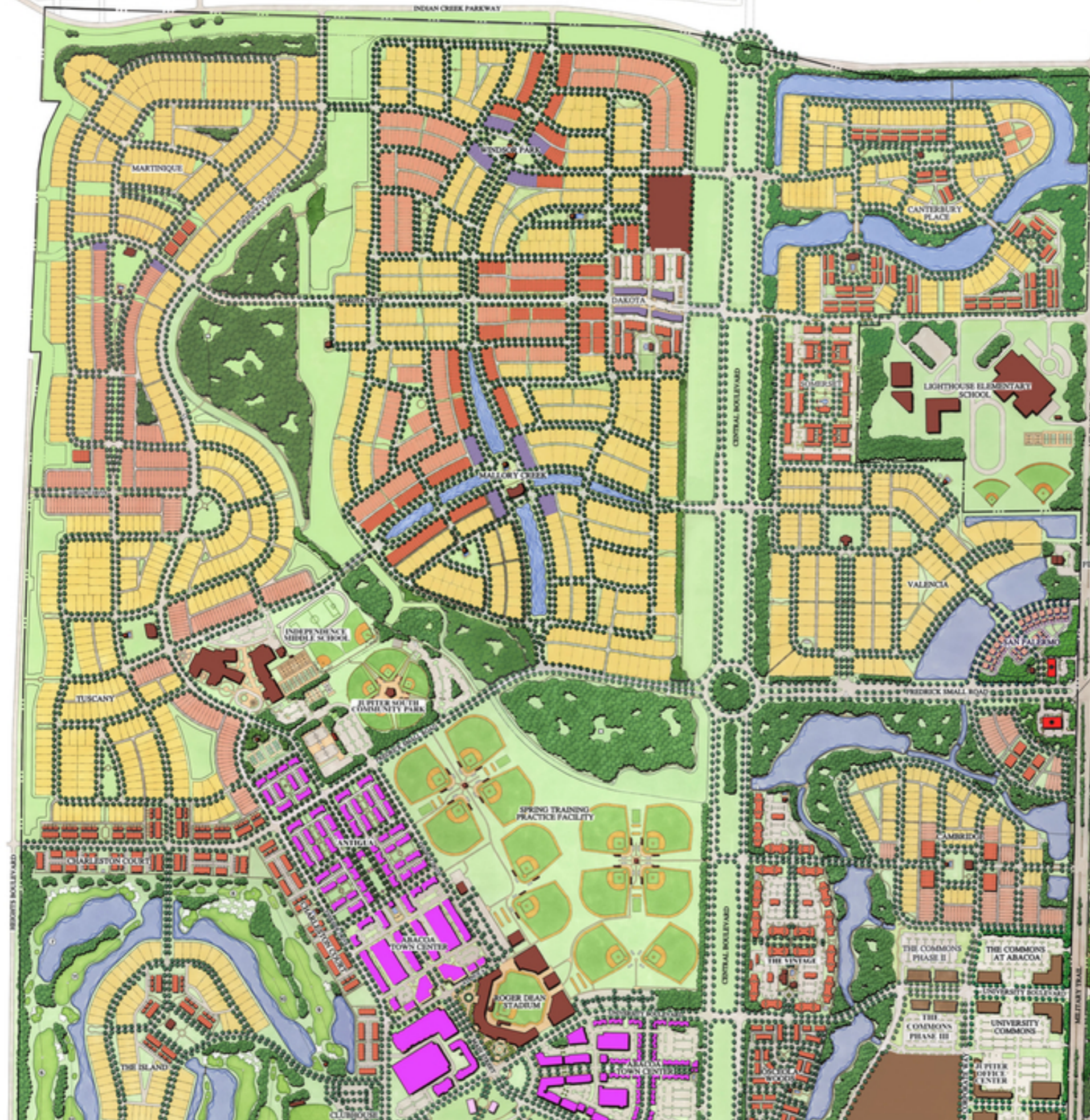


# Abacoa

## LAND USE PLAN

### LEGEND

- SINGLE-FAMILY RESIDENTIAL
- 2-3 FAMILY RESIDENTIAL (DUPLEX)
- MULTI-FAMILY RESIDENTIAL
- LIVE/WORK
- TOWN CENTER
- WORKPLACE/MIXED USE
- COMMERCIAL
- CIVIC BUILDINGS/SCHOOLS
- DRY WATER MANAGEMENT AREAS
- LAKES/WATER BODIES
- GREENWAY/PRESERVE AREA
- STADIUM & SPRING TRAINING FACILITY
- FLORIDA ATLANTIC UNIVERSITY & HONORS COLLEGE
- GOLF COURSE
- OBSERVATION/FISHING PLATFORMS
- GREENWAY ACCESS POINTS











# TODAY'S ISSUES

- A. Help Communities Implement Active Transportation Choices
- B. Promote Public Recreational Spaces and Facilities
- C. Invest in the Next Century of National Parks

A. Landscape Architects and our communities would like to see Congress pass a long-term surface transportation bill that includes an enhanced and fully funded Transportation Alternatives Program (TAP).

- Currently funding does not meet the demand for alternative transportation choices. 12% of all "trips" in the U.S. are walking or biking but receives less than 2% of federal transportation funding.
- Improved safety with better infrastructure for pedestrians and bicycles.
- Projects create jobs, promote tourism and help provide economic development.

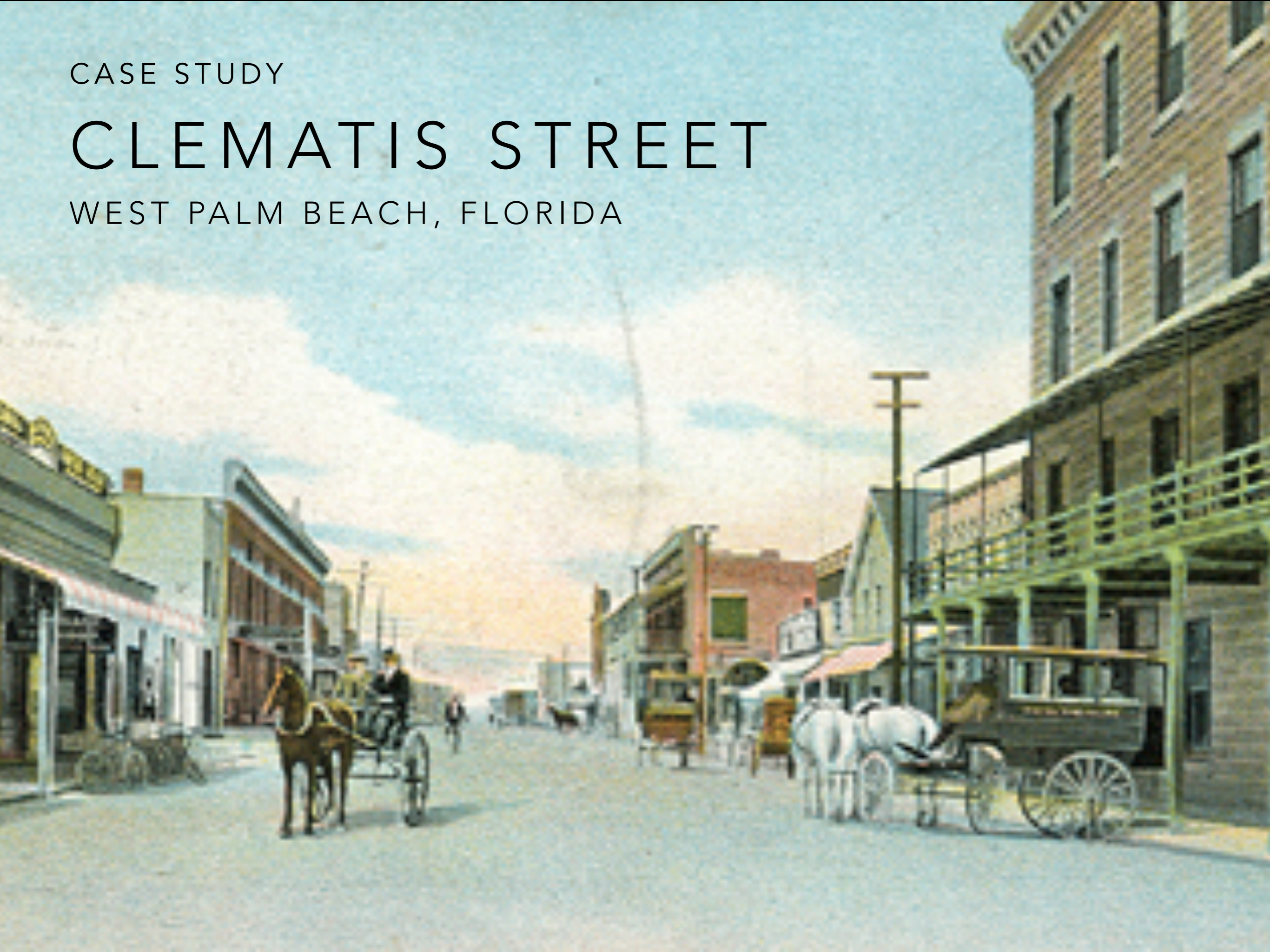
The American Society of Landscape Architects urges you to support S.705 and the re-authorization and full funding TAP.

- Senators Thad Cochran (Mississippi) and Benjamin Cardin (Maryland) have introduced S.705, the Transportation Alternative Program Improvement Act.
- This Act proposes technical corrections to TAP and makes it easier for states and local governments to efficiently and effectively utilize TAP for community projects.

CASE STUDY

# CLEMATIS STREET

WEST PALM BEACH, FLORIDA





HOTEL ALAMANDA

WORTH BY REAL ESTATE  
PALM BEACH LAND & INVESTMENT CO.

SEABOARD  
AIR LINE RAILWAY

DRUGS

CONSOLIDATED REALTY CO.

LITTLE BLUE SHOPPE  
SEA FOOD, FRIGID, HIGH QUALITY

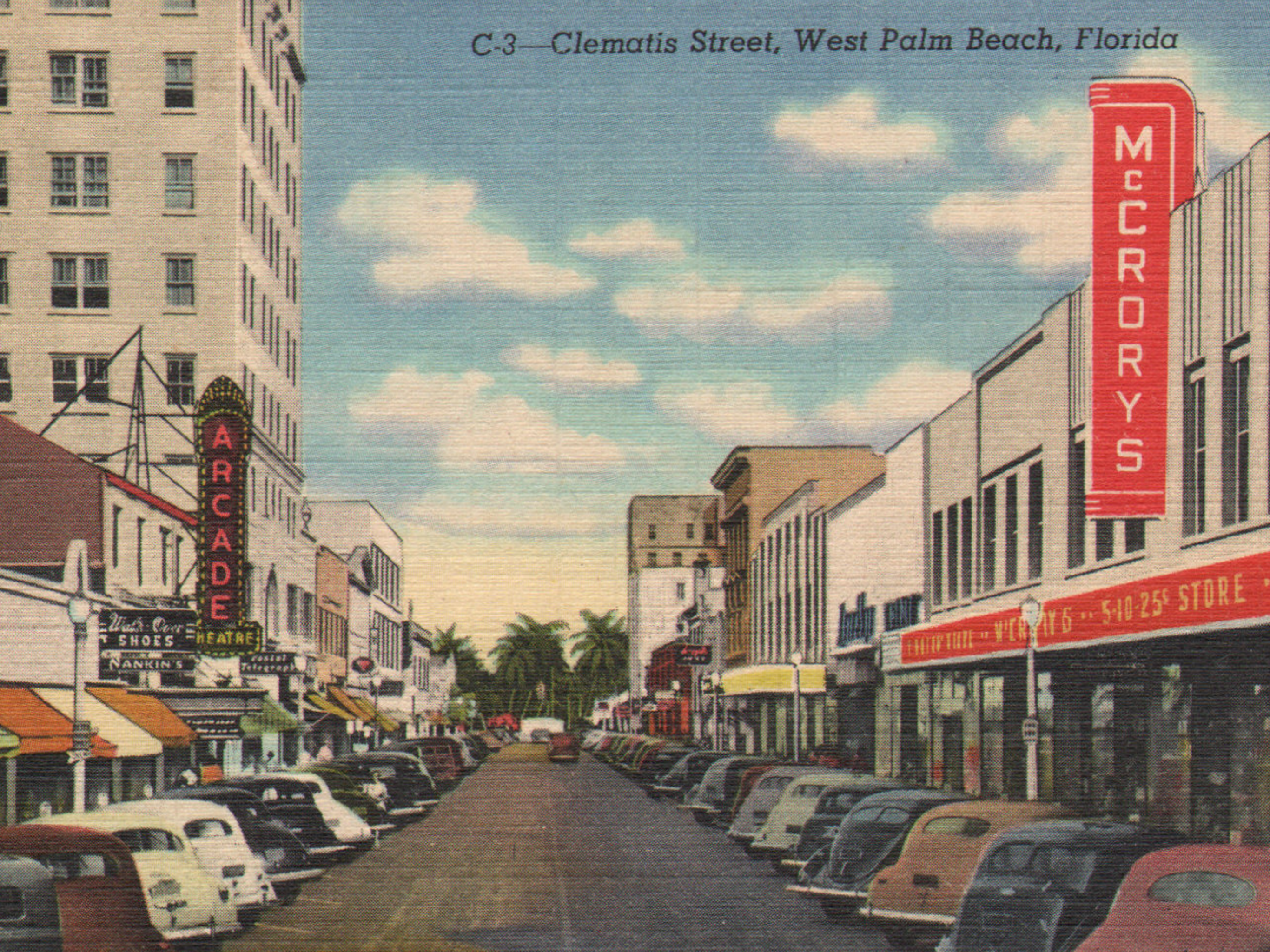
OYSTERS FISH

**CENTRAL MARKET**  
WESTERN MEATS  
Quality Great Food Known City Wide For Its Quality

AL  
BOYS

CO

C-3—Clematis Street, West Palm Beach, Florida









KREISS

KREISS BROS.

Baker's Quilt Co.

NO  
SERVICE  
CHARGE



BURDINE'S

*Savannah Fabrics*



LOFT

LOFT

The Public Market Place



NEORZA

Florida  
by the  
Sea





I ❤️ GM  
PALM BEACH  
FRESH MARKET  
SATURDAYS

YELLOW LINE

10

B. The American Society of Landscape Architects urges Congress to reauthorize and fully fund the Land and Water Conservation Fund (LWCF).

- 50 year program responsible for acquiring and developing high quality public outdoor recreation spaces is set to expire on September 30th.
- LWCF is not funded with non-taxpayer dollars but rather offshore energy receipts. Of the \$9 billion in energy receipts, a fully funded LWCF would only require \$900 million.
- LWCF has been underfunded for years (\$100 million in 2007 and \$300 million last 2 years).

- Project demands far exceed available funding.
- According to the Outdoor Industry Association LWCF projects annually contribute over \$600 billion to our national economy, directly support over 6 million jobs and generate more than \$80 billion in taxes.
- Every state and district as benefited with the creation of 42,000 parks, trails and recreation projects.
- Florida has received \$1 billion for projects such as Everglades National Park, Canaveral National Seashore and Big Cypress National Preserve.
- Impact to Florida: 329,000 jobs created, produced \$2.5 billion in tax revenue and supports \$38 billion in consumer spending.
- Bipartisan support.



The American Society of Landscape Architects urges you to support S.338 & HR.1814 and the re-authorization of fully funding the Land and Water Conservation Fund.

- Senators Richard Burr (NC), Michael Bennet (CO) and Kelly Ayotte (NH) have introduced S.338, and Congressmen Raul Grijalva (AZ) and Mike Fitzpatrick (PA) have introduced HR.1814, bills to permanently reauthorize LWCG.
- Senator Maria Cantwell (WA) and Ron Wyden (OR) have introduced S.890, a similar bill that provide full funding (\$900 million).

LAND AND WATER CONSERVATION FUND

# EVERGLADES NATIONAL PARK



LAND AND WATER CONSERVATION FUND

# EVERGLADES NATIONAL PARK



LAND AND WATER CONSERVATION FUND

# CANAVERAL NATIONAL SHORES



LAND AND WATER CONSERVATION FUND

# CANAVERAL NATIONAL SHORES



LAND AND WATER CONSERVATION FUND

# BIG CYPRESS PRESERVE



LAND AND WATER CONSERVATION FUND

# BIG CYPRESS PRESERVE



The American Society of Landscape Architects urges Congress to authorize and fully fund the National Parks Service (NPS).

- Initiated in 2006 by George W. Bush.
- The challenge calls for Congress to pass legislation that leverages private sector donations (up to \$100 million) for signature NPS projects/programs.
- NPS supports 1/4 million private sector jobs.
- For dollar invested = \$10 in economic activity.



- Congress provided \$10 million for Centennial Challenge projects. This administration has requested an additional \$40 million to meet urgent goals.
- Protect our parks assets, enhance facilities and services.
- Bipartisan support.
- Senators Rob Portman (OH) and Maria Cantwell (WA) led an amendment to the FY2016 budget to establish a NPS Centennial reserve fund.



NATIONAL PARKS CENTENNIAL CHALLENGE

# BISCANE BAY NATIONAL PARK

\$30,000

NATIONAL PARKS CENTENNIAL CHALLENGE

# BISCANE BAY CORAL RESTORATION

\$110,000

NATIONAL PARKS CENTENNIAL CHALLENGE

# EVERGLADES LAND RESTORATION

\$5,484,588

THANK YOU!

WILL YOU SPONSOR?

A. Help Implement Active Transportation Choices

B. Promote Public Recreational Spaces and Facilities

C. Invest in the Next Century of National Parks