

PROJECT SPOTLIGHT

Historic Mallard Island

Rainy Lake, Minnesota



We are assembling a team now to return to Mallard Island for the week of June 25 to July 1 and will in this second season continue to refine measured and interpretative drawings and compiling the historical timeline of Oberholtzer's lifetime of work creating "The Mallard" as his masterful work of landscape architecture.

I initiated this project five years ago as an Historic American Landscapes Survey, writing a short history and making measured and interpretative drawings of the island site plan.

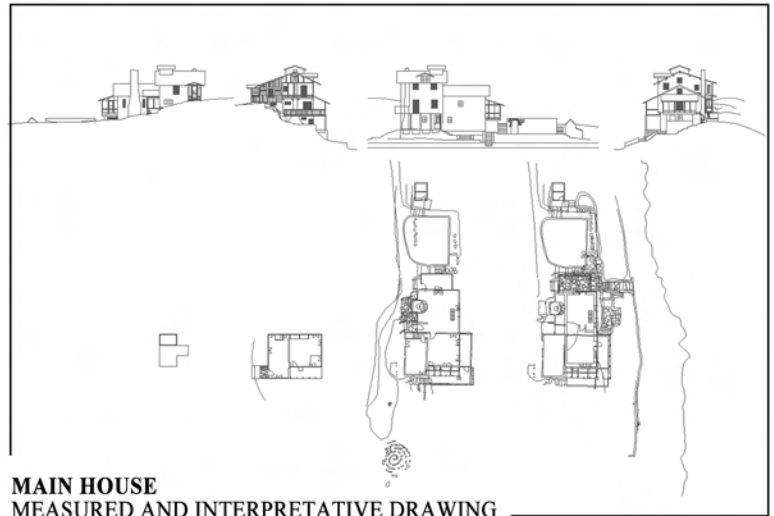
Leading up to our work of last summer, I collaborated with NPS National Center for Preservation Technology and Training to translate LiDAR point cloud data from the Minnesota Department of Natural Resources into topographical contours of the island then updated the site plan into a 3-D model.

Our field work last summer contributed to perfecting the site plan, and most significantly LiDAR capture of the Main House environment (house, root cellar, and landscape terraces), along with traditional field documentation, produced good results. I am currently using that data to construct detailed drawings of the Main House Complex.

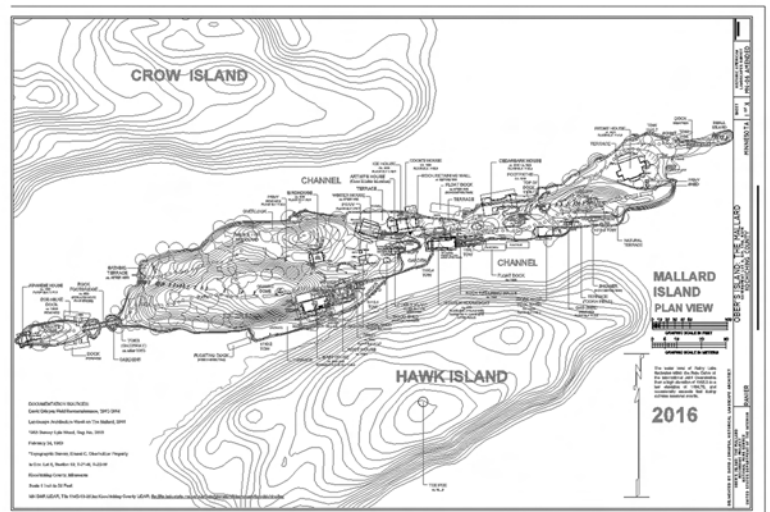
We also are working with Minnesota Historical Society transcribing letters and papers to construct a historical timeline of the development of the Mallard Island cultural landscape and have compiled a book-length manuscript.

I find it necessary to return to Mallard Island with the measured and interpretative architectural drawings in hand for field verification of the Main House complex to perfect the drawings. As it is necessary for me to return for the week, I am assembling a team of ten participants to work with me and other preservation professionals to make measured and interpretative drawings of this historic island.

Contact:
 David Driapsa, FASLA
 Historical Landscape Architect
 David J Driapsa Landscape Architecture
 ddriapsa@naples.net
 (239) 591-2321
 www.davidjdriapsa.com



MAIN HOUSE
 MEASURED AND INTERPRETATIVE DRAWING
 DAVID DRIAPSA, FASLA



MALLARD ISLAND
 MEASURED AND INTERPRETATIVE DRAWING
 DAVID DRIAPSA, FASLA



MAIN HOUSE
 LARGE FORMAT PHOTOGRAPHY
 BILL LUTRICK, ASLA